

January 2026

FELTWELL PARISH MAGAZINE

YOUR CONNECTION TO YOUR COMMUNITY



Subscriptions for existing subscribers
will be collected in February for the
year March 2026 - 27.

INSIDE THIS ISSUE

**Penguins Tell Us About The
Moon!**

**The Secret Workouts You Do
Sir Alan McLean MP 1923-29**

**Enjoy Gardening? Join FiB
+ Scams, Curios & Reports**

**And much more inside incl. our
usual puzzles**

All proceeds from the sale of this magazine are shared between village organisations and St Mary's Church.

FELTWELL ORGANISATIONS

List maintained by Paul Garland.

Alveva Quilters	Sharon Burbridge	01366727002
Feltwell Bowls	Martin Blackman	829821
The Royal British Legion (Hall 828480)	Ian Rayner	07766 348679
RBL Poppy Appeal Organiser	Mary Reynolds	828130
Feltwell Historical and Archaeological Society	Marion Lucas (Chairman)	828769
Feltwell Table Tennis Club	Steve Wellington	07436 905520
Beavers and Cubs	Claire Scarff	827555
Feltwell School PTA		@ the school
Feltwell Women's Institute	Claire Scarff	827555
Feltwell Playgroup	Merle Gallagher	07582 371984
Feltwell Scout Group	Claire Scarff	827555
Feltwell United Football Club	Neil Edwards (Secretary)	07391866914
Feltwell United Youth Football Club	Kate Collins	07888847452
Feltwell & Thetford District Mencap	Mrs T. Sismey	827292
Feltwell Brownies	Tracey Cock	
Feltwell Social Club		828093
Feltwell Primary School	Mrs J. Lillycrop	828334
Feltwell Golf Club	Joanne Bates	827644
Feltwell In Bloom	Rita Page	07785345614
Associate Priest of St Mary's	Revd. Juanita Hawthorne	01336 728545
Churchwarden of St Mary's	Christine Parker	827152
Friends of St Mary's	Stephen Parker	827152
Feltwell Men's Breakfast Club	Paul Garland	827029
Feltwell Methodists	Mike Wilkinson	07712 578721
Feltwell Museum	Graham Simons	828387
Parish Clerk, Jo Martin. Email: clerk@feltwellparishcouncil.gov.uk		828383
Parish Council website: https://feltwellparishcouncil.gov.uk		
Feltwell's History Website can be found at http://www.feltwell.net		

Deadline for the next issue is 14th January 2026

Submitted articles may be hand written, emailed or typed in MS Word and sent to: The Editor, Mr Paul Garland, 16, Falcon Road, Feltwell, (827029),
Email: garlandp@btinternet.com

Advertisers should contact our Advertising Manager: Jean Winter, 10, Clough Drive, Feltwell, Thetford IP26 4AS . (01842 827710)
Email: jean.winter@gmx.com

Distribution is by Ian Webb (828167) & Paul Garland

You can subscribe to this magazine for £5 a year, incl. two free issues and free delivery in Feltwell. Gift subscriptions are available, contact the editor.



FROM PENGUINS CLASS

In English we have been writing fact files about the moon inspired by the story, *Sidney, Stella and the Moon*.

All About the Moon

Have you ever looked up at the night sky and seen a big, bright circle? It shines in the sky and changes shape as the days go by. People have even visited the Moon in rockets! Let's find out some amazing facts about our wonderful Moon.

What is the moon made of?

The moon is made of rock. It has craters on the surface. Craters are holes which are made from asteroids, meteorites and comets.

How can you travel to the moon?

To get to the moon, you need to travel in a rocket. It takes 3 days to get to the moon from Earth.

What is it like on the moon?

It is light on the moon because there is less gravity. This means you can jump higher.

Who was the first person on the moon?

The first astronaut to land on the moon was Neil Armstrong. Since then, there have been 12 people to walk on the moon. He had to wear a spacesuit, as there is no air on the moon.

Did you know?

- Firstly, the moon is 4.53 billion years old
- The moon is a quarter of the size of the Earth.
- Finally, the moon is not a light, it reflects the sun's light.

SUBSCRIPTION INFORMATION

If casual readers would like all future issues of this magazine delivered **FREE** to your home in Feltwell please contact our Distribution Manager Ian Webb on 828167.

March 26-March 27—£5 (12 issues, 2 free).

All subscriptions below 11 copies are pro rata.

GARDEN MACHINERY SERVICED AND REPAIRED



Including: Lawnmowers, Strimmers,
Hedge Cutters, Chainsaws etc

Collection and Delivery Available

Lawnmowers Bought and Sold

Contact: Gerry on 07903890888



D.B. CHIMNEY SWEEP

- Bird nest removal
- Smoke test
- Open fires/wood burners
- Rayburns

Please call: 07899 951668

07775 751010

01638 712218

Or email: dbchimneysweep@gmail.com

www.dbchimneysweep.co.uk

We are a family-run business based in Worlington, Suffolk. Fully insured. Professionally trained & certified by Rodtech UK Ltd. We use the world's most advanced power sweeping system and fault-finding CCTV.

It is important to have your chimney swept once a year and certified, as if not, it may invalidate your home insurance.



DB Chimney Sweeps



WINTER WARMERS: THE SECRET WORKOUTS IN FELTWELL LIFE

January in Feltwell is a month that tests even the hardiest among us. The air is cold enough to make your eyelashes stick together, the pavements are frozen in decorative patterns that resemble a hazard sign, and the wind... well, the wind hasn't so much "arrived" as "taken up permanent residence and started redecorating."

But here's the good news: while everyone's busy feeling sluggish after December, the villagers of Feltwell are actually performing a series of impressive, calorie-burning winter workouts, entirely by accident.

Let's start with the **Windscreen Scraper Sprint**, a beloved early-morning ritual. You know the one: you dash out in your pyjama bottoms, a coat that doesn't fasten properly, and a single glove you found on the stairs. You scrape furiously, nip back inside to warm up, then realise you've left the keys in the kitchen. Congratulations, that's interval training.

Then we have the **Wheelie Bin Resistance Pull**, best attempted during a full Fenland crosswind. This is basically a strength and balance challenge combined. Highly advanced participants may find themselves travelling several feet sideways before regaining control. Intermediate students simply mutter things under their breath and try not to be blown into their neighbour's hydrangeas.

Next up, a favourite winter workout for many of us: **The Central Garage Courtesy Challenge**.

This happens every time you pull in for petrol, tyres, or a moment of pure mechanical mercy. Occasionally, a true Feltwell moment unfolds: like when a damsel in distress (yes, that absolutely includes you and me) discovers a misbehaving tyre. Within seconds, one of the mechanics emerges from the workshop like a friendly dragon, overalls warm, breath swirling in the cold, still radiating the strength of someone who's just lifted something heavy and metal with casual ease. They check your tyres, offer reassuring nods, and somehow make the whole thing look like a strength class in disguise. Honestly, watching them work is motivation enough for anyone's January

Chimney Sweeping & CCTV Inspections

NEIL NEILL-GOURLAY



NNG CHIMNEY SWEEPS



07423 337535



nngchimneysweeps@outlook.com



Based in Feltwell, Norfolk

Facebook: NNG Chimney Sweeps

P. M. Digweed Ltd

Painting &
Decorating Services

Over 40 years experience



Phone Paul on

07932 074966 or

Email digweed64@gmail.com

John Skelly (Fish) Ltd



*Fresh Fish delivered
to your door every*

Thursday afternoon

Fresh, Smoked & Shellfish

Mob: 07759 916990

Total Health Footcare

Your feet in safe hands

Karen Stewardson

Foot Health Practitioner

TCFCP Dip. BEd Hons

07789 608310

Toenail cutting and ingrown nails treated.
Verrucae, Corns and Callouses and hard skin
removal. Complete Diabetic Footcare.

Please call for a home visit appointment

Now offering Reflexology



Help with IT services

HELP



- Has your PC crashed?
- Is your laptop slow?
- More storage needed?
- Wi-Fi coverage issues?
- Need a website setup?
- General IT help required?

Covering Feltwell and the surrounding area

To discuss further please email me at:

david@help-with-it.services

PLUMBER

BASED IN FELTWELL

OVER 30 YEARS
EXPERIENCE

FREE ESTIMATES

NO CALL OUT CHARGES

07951 158460

GAS SAFE REGISTERED

fitness goals.

Then we have a daily event performed with unmatched determination: **The Edmund de Moundeford School Dash.**

This is a complex full-body routine involving controlled glute activation, brisk arm swings, and sharp dodging manoeuvres to avoid icy puddles while shepherding small humans towards the gate. Morning participants juggle book bags, water bottles, forgotten PE kits, and at least one child insisting they're "absolutely freezing" despite refusing to wear their hat. Afternoon participants repeat the sequence in reverse — usually with added sprint intervals because someone finished work late or the wind has decided to attack from a new direction.

If you've done the school run in January, you've basically completed a winter bootcamp.

Alternatively — for those who prefer a more rural flavour — there's the **Frozen Field Farmer's March.** This happens when a villager in wellies decides a walk across an icy field is "only five minutes, honestly." The gliding, sliding stabilisation muscles activated in this manoeuvre would make a Pilates reformer blush.

And, of course, the classic winter Feltwell favourite: **The Two-Shops Hop**, that brisk dart from one village shop to the other while pretending you're absolutely fine in the cold. Add a few carrier bags, and you're practically doing loaded carries. Gold star if you don't drop the milk.

All these tiny moments keep your joints moving, your balance sharp, and your body surprisingly stronger than you think, even on the chilliest January days.

So, this winter, if you catch yourself battling the elements, wrestling with wheelie bins, navigating the school run with heroic flair, or marvelling at the cheerful crew at Central Garage, take a moment to congratulate yourself. You've just completed a secret Feltwell workout — and you didn't even need Lycra for it.

Here's to a fresh start, a stronger you, and a year filled with small steps that make a big difference. It's a new year, let's make it a good one. Happy New Year

Helen, Life Fitness Reengineering

FELTWELL PARISH COUNCIL

NOTICE OF VACANCY

FOR PARISH COUNCILLOR

Notice is hereby given that there is a vacancy on Feltwell Parish Council. The vacancy has previously been advertised and no election has been requested therefore the Council is now able to fill the vacancy by co-option.

- *Do you have time or expertise which could benefit your community?*
- *Do you want to make a difference to all those around you?*
- *Are you concerned about your local area?*
- *Do you want to represent the views of local people?*

If you would like to make a difference and be involved in shaping the future of your local community, why not step forward and apply to become a Feltwell Parish Councillor?

Applicants should note that Councillors are expected to attend regular monthly meetings on the second Monday of each month and any additional meetings as may be arranged, and to represent the electors of Feltwell in raising and discussing those issues of interest and concern on which the Parish Council is empowered to act.

Membership of the Council is open to electors who are citizens of any state in the European Union or of the Commonwealth and:-

- Have lived in the Parish or within three miles of it for the preceding 12 months
- Are a registered elector in the Parish, or
- Have occupied as owner or tenant any land or premises in the Parish for the preceding 12 months, or
- Have their principal or only place of work in the Parish for the preceding 12 months
- Must not be disqualified from holding office as a Councillor (by reason of a criminal record, bankruptcy or involvement in corrupt practices)

Any person wishing to apply for this vacancy should contact the Parish Clerk on 01842 828383 or email clerk@feltwellparishcouncil.gov.uk for further details.

THEY DON'T MAKE THEM LIKE THIS ANYMORE

I am indebted to Mr Edmund Lambert for providing the following historical document which fell, rather surprisingly, out of a pile of papers he was examining a few months ago. I've transcribed the text as that in the scans may not be easy to read once printed at A5 size.

It is the election leaflet for Sir Alan McLean, prospective Conservative candidate, for the Sout Western Division of Norfolk, from 1923.



Sir Alan McLean MBE (5 July 1875 – 9 May 1959) was a British Member of Parliament.

McLean was educated at Harrow School and Trinity College, Cambridge. He became a barrister at Lincoln's Inn. He was also chair of the Lamson Paragon Supply Company, and served on the council of the National Rifle Association. During World War I, he served in France.

McLean stood for the Conservative Party in Caerphilly at the 1922 United Kingdom general election, but was not elected. He then stood in South West Norfolk in 1923, winning the seat. He held the seat until 1929, when he was defeated, but won the seat back at the 1931 United Kingdom general election, standing down in 1935.

McLean retired to Alford, Aberdeenshire, where he was elected to Aberdeenshire County Council, serving as its convenor from 1950 until 1955. He was also a deputy lieutenant for Aberdeenshire.

McLean was knighted in 1933, and was also made a Member of the Order of the British Empire.

With thanks to Wikipedia, the free encyclopaedia

From a debate in Parliament on 5th March 1934 concerning the production of sugar beet. (From www.theyworkforyou.com)

Some hon. Members have expressed alarm at the prospect of an enormously increased acreage for sugar beet. One hon. Member suggested that the acreage should be doubled. I do not → page 11

Hear for Norfolk



Supporting people with hearing loss
and related conditions

Hear for Norfolk is your local charity dedicated to improving the wellbeing, aiding communication and furthering the quality of life for people with hearing loss and hearing related conditions.

We provide support through the following range of services:

Aural Care - removal of earwax using microsuction

Adult Audiology - NHS funded hearing assessments
and fitting of hearing aids for people ages 50+

Both services are delivered by trained, registered and experienced nurses and audiologists

Hearing Support - maintenance of NHS issued hearing aids

Otoscopy Clinics - screening of ears for the presence of earwax

Cuppa Care Project - emotional and wellbeing support,
information and advice to people of all ages

Hearing Loss Awareness Training

Our services are available from our community-based and mobile clinics, and
domiciliary/care home visits for people who are housebound



Please call us on 01603 404440, email us at nda@hearfornorfolk.org.uk or visit our website at www.hearfornorfolk.org.uk for more information

Scan
me!



Hear for Norfolk is the operating name of Norfolk Deaf Association (NDA), a Charitable Company Limited by Guarantee registered in England & Wales No. 07966408
Registered Charity in England & Wales No. 1146883

SOUTH-WESTERN DIVISION OF NORFOLK.

PARLIAMENTARY ELECTION, 1923



ALAN McLEAN
The Conservative Candidate,
who respectfully solicits your
VOTE and INTEREST.

think it is possible for the factories to have dealt with such a large increase. It is quite true that by increased efficiency they are using more and more sugar beet and that growers are getting a better tonnage per acre and also a better percentage of sugar content, but there is a limit to that, and the factories have set a clear → page 18

Friends of Feltwell Playgroup

Helping little hands explore a big world

We are delighted to introduce **Friends of Feltwell Playgroup**, a fundraising group set up to support the children of our local playgroup. Our aim is to provide the very best start for the children, creating happy memories and special opportunities through fundraising and community events.



One of the simplest ways to get involved is by joining our 100 Club. For just £24 per number per year, you'll be entered into a monthly prize draw. The winning number will be drawn on the 1st of every month, starting this October. The prize is 50% of the total collected each month, with the remaining funds going directly to benefit the children of Feltwell Playgroup.

Please email - friendsoffeltwellplaygroup@gmail.com to register your interest.

We warmly invite you to follow our page on Facebook — **Friends of Feltwell Playgroup** — where you can find out more about upcoming events, fundraising, and how to get involved.



Together, as a community, we can help our little learners explore a big world.

The "Street Piano"
is available every
day from dawn til
dusk in the
Methodist Chapel
entrance. Come and
dance those fingers
over the keys!

**JEM PROPERTY
MAINTENANCE**



Handy Man & Property Maintenance

JOHN - 07798 672 552

jempropertymaintainer@gmail.com

Please ask all the occupants of your house to read this.

To the Electors of the SOUTH-WESTERN DIVISION OF NORFOLK.

Ladies and Gentlemen,

At the unanimous invitation of the South West Norfolk Conservative Association, I have the honour to offer myself as a Candidate at the forthcoming Election.

I need hardly say that I stand as a Conservative and as a supporter of Mr. Baldwin's Policy.

TRADE & EMPLOYMENT.

In my opinion the problem of the revival of trade and industry with the consequent increase of employment is, by far, the greatest problem requiring the consideration of the Electorate at the present moment. The unparalleled amount of unemployment is mainly due to the economic disorganisation of the world as a result of the Great War. If we are to find a real solution of the problem we must consider the causes. They are:—

(1) **Decrease of purchasing power.** At home, owing to the depressed state of industry, employers are earning very small profits—in fact, in many cases they are working at a loss—the workers are earning small wages or are forced to draw the dole. All classes in fact have little to spend. Abroad, foreign countries are unable to purchase here to any extent owing to the fall in their exchanges.

(2) **Unfair competition.** By this, I mean the selling in this country of foreign goods at low prices rendered possible by (a) the fall in exchange (b) the lower standard of living of the workers in many countries.

(3) **High tariffs abroad.** These make difficult sales of our manufactures abroad. They also force our manufacturers to have factories in foreign countries, thus employing foreigners in the manufacture of goods which would otherwise be manufactured here and give employment to our own people.

These being the main causes of the present unemployment I support unreservedly Mr. Baldwin's programme.

(1) He asks permission for the Electorate to put a discriminating tariff on foreign manufactured goods. Such a tariff would have to be carefully framed and would be used

Please ask all the occupants of your house to read this.

To the Electors of the

SOUTH-WESTERN DIVISION OF NORFOLK.

Ladies and Gentlemen,

At the unanimous invitation of the South West Norfolk Conservative Association, I have the honour to offer myself as a Candidate at the forthcoming Election.

I need hardly say that I stand as a Conservative and as a supporter of Mr. Baldwin's Policy.

TRADE & EMPLOYMENT.

In my opinion the problem of the revival of trade and industry with the consequent increase of employment is, by far, the greatest problem requiring the consideration of the Electorate at the present moment. The unparalleled amount of unemployment is

- (a) for the purpose of protecting our home market against unfair competition ;
 - (b) to induce foreign countries to lower their customs tariff, thus opening their markets to British goods, and
 - (c) Lastly, the tariff would be used for giving a preference to our Colonies— increase of trade with the Empire is not only a matter of sentiment, valuable though this may be, but it is also good business.
- (2) **No tax on food.** Mr. Baldwin has given a clear pledge that the tariff proposed will not include any tax on food—wheat, flour, oats, meat, bacon, mutton, cheese, butter and eggs. He further promises to **reduce the cost of food** by using part of the money derived from a tariff in reducing the existing duties on tea and sugar.

AGRICULTURE.

This is still the greatest and most important industry in the country. A happy and prosperous rural population is essential, in my opinion, to the welfare of the country. Having regard to Mr. Baldwin's pledge that there should be no tax on food it is impossible to assist agriculture to any great extent by protection. It is essential, however, to add to the farmer's revenue and the labourers' wages, and to preserve—if possible to extend—the acreage of land under the plough. Mr. Baldwin therefore proposes to make an annual grant for holdings of over one acre of £1 for each acre of land under cultivation. To obtain the grant the farmer must pay a **minimum** wage of 30/- to each able-bodied labourer.

SOCIAL WELFARE.

I am in favour of co-ordinating our three chief measures of social welfare, namely, Unemployment Insurance, Health Insurance, and Old Age Pensions. In the case of Old Age Pensions, I hold that a man or woman who has saved up for his or her old age ought not to be deprived of the pension on that account. Our social welfare legislation ought to encourage thrift.

WOMEN. Unemployment affects women as much as men, and I appeal to all women voters to exercise their right of voting and allow Mr. Baldwin to make a practical attempt to remove the present distress.

EX-SERVICE MEN. As an Ex-Service man, I am keenly interested in pensions of the Ex-Service men and in their welfare generally.

I am strongly opposed to the Labour Party's programme of a great extension of Relief Work. These have to be paid for out of rates and taxes and any increase in these would penalise industries and thus prevent their recovery.

Again, I am equally against Nationalisation and Capital Levy which, in my opinion, would do much harm to all classes.

It is neither increased taxes nor curtailed capital but developed and increased trade we require.

I am, Ladies and Gentlemen,

Your obedient Servant,

ALAN MCLEAN

Gorgate Hall, East Dereham, Norfolk,

November 26th, 1923.

mainly due to the economic disorganisation of the world as a result of the Great War. If we are to find a real solution of the problem we must consider the causes. They are :—

- (I) **Decrease of purchasing power.** At home, owing to the depressed state of industry, employers are earning very small profits—in fact, in many cases they are working at a loss—the workers are earning small wages or are forced to draw the dole. All classes in fact have little to spend. Abroad, foreign countries are unable to purchase here to any extent owing to the fall in their exchanges.

Unfair competition. By this, I mean the selling in this country of foreign goods at low prices rendered possible by (a) the fall in exchange (b) the lower standard of living of the workers in many countries.

High tariffs abroad. These make difficult sales of our manufactures abroad. They also force our manufacturers to have factories in foreign countries, thus employing foreigners in the manufacture of goods which would otherwise be manufactured here and give employment to our own people. These being the main causes of the present unemployment I

AGRICULTURE.

What the Subsidy is :

- ONE.** Mr. Baldwin's Government proposes to give a subsidy of £1 an acre on arable land to occupiers holding more than one acre.
- TWO.** Small Holdings, Market Gardens and Land under Fruit are included.
- THREE.** As one of the main objects is to stop unemployment and a fall in wages, **the wages of the farm workers are to be not less than 30/- a week** to all able-bodied adult men in every case where the subsidy is paid. Where wages now rule above the 30/- minimum, it is expected that the farm workers will get their share in the benefit of the subsidy by higher wages. Mr. Baldwin's Government will, if necessary, attend to this.
- FOUR.** The Government will decline to pay the subsidy to any employer who pays less than 30/- a week to an able-bodied labourer.
- FIVE.** Rents are not to be raised on account of the subsidy.
- SIX.** The subsidy will be paid on the "acreage" instead of on production. This will not only encourage farmers to keep the lighter or poorer lands under the plough, but will lead to very much less interference with farmers and smallholders by officials than would be the case with a subsidy on the basis of production per acre.
- SEVEN.** There is also to be a duty on imported foreign malting barley of 10/- per quarter.

VOTE CONSERVATIVE.

Printed and Published by W. J. Cox, Swaffham.

support unreservedly Mr. Baldwin's programme.

- (1) He asks permission for the Electorate to put a discriminating tariff on foreign manufactured goods. Such a tariff would have to be carefully framed and would be used for the purpose of protecting our home market against unfair competition;
- to induce foreign countries to lower their customs tariff, thus opening their markets to British goods, and
- Lastly, the tariff would be used for giving a preference to our Colonies— increase of trade with the Empire is not only a matter of sentiment, valuable though this may be, but it is also good business.
- (2) **No tax on food.** Mr. Baldwin has given a clear pledge that the tariff proposed will not include any tax on food— wheat, flour, oats, meat, bacon, mutton, cheese, butter and eggs. He further promises to reduce the cost of food by using part of the money derived from a tariff in reducing the existing duties on tea and sugar.

AGRICULTURE.

This is still the greatest and most important industry in the country. A happy and prosperous rural population is essential, in my opinion, to the welfare of the country. Having regard to Mr. Baldwin's pledge that there should be no tax on food it is impossible to assist agriculture to any great extent by protection. It is essential, however, to add to the farmer's revenue and the labourers' wages, and to preserve—if possible to extend—the acreage of land under the plough. Mr. Baldwin therefore proposes to make an annual grant for holdings of over one acre of £1 for each acre of land under cultivation. To obtain the grant the farmer must pay a **minimum** wage of 30/- to each able-bodied labourer. *(30 shillings = £1.50. Ed)*

SOCIAL WELFARE.

I am in favour of co-ordinating our three chief measures of social welfare, namely, Unemployment Insurance, Health Insurance, and Old Age Pensions. In the case of Old Age Pensions, I hold that a man or woman who has saved up for his or her old age ought not to be deprived of the pension on that account. Our social welfare legislation ought to encourage thrift.

WOMEN. Unemployment affects women as much as men, and I appeal to all women voters to exercise their right of voting and allow Mr. Baldwin to make a practical attempt to remove the present distress.

EX-SERVICE MEN. As an Ex-Service man, I am keenly interested in pensions of the Ex-Service men and in their welfare generally.

I am strongly opposed to the Labour Party's programme of a great extension of Relief Work. These have to be paid for out of rates and taxes and any increase in these would penalise industries and thus prevent their recovery.

Again, I am equally against Nationalisation and Capital Levy which, in my opinion, would do much harm to all classes.

It is neither increased taxes nor curtailed capital but

developed and increased trade we require.

I am, Ladies and Gentlemen,

Your obedient Servant,

ALAN McLEAN

Gorgate Hall, EAST DEREHAM, NORFOLK,

November 26th, 1923.

The text of the final page is continued over.



Major Sir Alan McLean

BIRTH

5 Jul 1875

Greater London, England

DEATH

9 May 1959 (aged 83)

Greater London, England

BURIAL

Forbes Graveyard

Alford, Aberdeenshire, Scotland



line as to the amount of beet-sugar they can handle in any given season. They are now being offered contracts for more than they can handle. The amount that they can handle they are handling now, and I do not think that existing factories could possibly handle anything like double the present acreage.

FELTWELL LODGE

RESIDENTIAL CARE HOME

Lodge Road, Feltwell, Norfolk IP26 4DR



Feltwell Lodge is a comfortable Victorian property dating from 1860. It is a former hunting lodge set in 5 acres of beautiful landscaped gardens situated between Feltwell and Methwold.

The home is run by the proprietors, together with a fully experienced and caring staff providing a full 24 hour cover. The atmosphere is friendly, with no restrictions other than consideration for fellow guests.

Visitors are welcome and we encourage the maintenance of close links between residents and their families and friends.

**For Brochures please phone: Mr Paul Hanley RN
or Mrs Sandra Hanley RN**

01366 728282

Website: www.feltwelllodge.com

E-mail: feltwelllodge@hanleycarehomes.com

AGRICULTURE.

What the Subsidy is :

ONE.

Mr. Baldwin's Government proposes to give a subsidy of £1 an acre on arable land to occupiers

TWO.

Small Holdings, Market Gardens and Land under

THREE.

As one of the main objects is to stop unemployment and a fall in wages, the wages of the farm workers are to be not less than 30/- a week to all able-bodied adult men in every case where the subsidy is paid. Where wages now run above the 30/- minimum, it is expected that the farm workers will get their share in the benefit of the subsidy by higher wages. Mr. Baldwin's Government will, if

FOUR.

The Government will decline to pay the subsidy to any employer who pays less than 30/- a week to an

FIVE.

Rents are not to be raised on account of the subsidy.

SIX.

The subsidy will be paid on the " acreage " instead of on production. This will not only encourage farmers to keep the lighter or poorer lands under the plough, but will lead to very much less interference with farmers and smallholders by officials than would be the case with a subsidy on

SEVEN

There is also to be a duty on imported foreign malting barley of 10/- per quarter.

VOTE CONSERVATIVE.

Printed and Published by W. J. COE, Swaffham.



St Mary's Feltwell

**Your Parish Church is open
every day 9am until 4pm.**

CONTACTS

Churchwarden

Chris Parker

01842 827152

cmparker@talktalk.net

Benefice Administrator

Fiona Hearn

07811 782316

wisseygrimshoebenefice@gmail.com

St Mary's is part of **Grimshoe Benefice**
Including St James' Hockwold, St Andrew's Northwold
& St Mary's Weeting

TO ARRANGE, WEDDINGS, FUNERALS AND HOME COMMUNION

Please contact:

Fiona Hearn 07811 782316

wisseygrimshoebenefice@gmail.com

TO ARRANGE BAPTISM

Please contact:

Tammy Wright 07717 507665

grimshoebaptism@gmail.com

The **1923 United Kingdom general election** was held on Thursday 6 December 1923. The Conservatives, led by Prime Minister Stanley Baldwin, won the most seats, but Labour, led by Ramsay MacDonald, and H. H. Asquith's reunited Liberal Party gained enough seats to produce a hung parliament. It is the most recent UK general election in which a third party won over 100 seats (158 for the Liberals) and the most narrow gap (100 seats) between the first and third parties since. The Liberals' percentage of the vote, 29.7%, trailed Labour's by only one percentage point and has not been exceeded by a third party at any general election since.

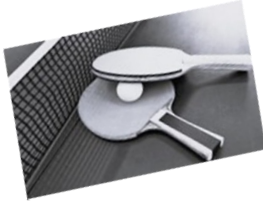
MacDonald formed the first Labour government with tacit support from the Liberals. Rather than trying to bring the Liberals back into government, Asquith's motivation for permitting Labour to enter power was that he hoped they would prove to be incompetent and quickly lose support. Being a minority, MacDonald's government only lasted ten months, and another general election was held in October 1924.

Norfolk South West Results

Party	Candidate	Votes	%
Unionist	Alan McLean	11,269	53.5
Labour	W B Taylor	9,779	46.5
	Majority	1,490	7.0
	Turnout		64.7
Unionist gain from National Liberal			

National Results

Political Parties	Total Votes	%	MPs
Conservative Party	5,514,541	38.0	258
Liberal Party	4,301,481	29.7	158
Labour Party	4,439,780	30.7	191
Communist Party	39,449	0.2	0
Irish Nationalists	97,993	0.4	3



MONDAY and TUESDAY CLUBS

Table Tennis is now up and running every
Monday at 7.00pm and Tuesday from 1.45
at the Methodist Hall, Feltwell.

Any skill level or none. Just come along for an afternoon of fun. It's a load o' laughs, which is good for the heart, and the physical exercise loosens those stiff joints. **All ages** welcome. Steve Wellington is the organiser. **£3 for two hours of fun.**

Pool and Snooker NOW available.

THURSDAY CLUB

On your own? New to the village?

Want to meet other people?

Then come and join us.

Thursday 10am -12.noon at Methodist Church Community Hall in Bell Street.

CHAT, Gentle Exercises, Play Table Tennis, Snooker, Board Games, Cards, Dominoes and loads more. We do Countdown, Bingo and more.

We are also a listening ear and can help with form filling and other information.

Open to all over age 18 —whatever your ability.



Come and see the warm welcome you will get in our
Warm Space.

Oh, and we do refreshments.

TOTALLY ACCESSIBLE PREMISES



FELTWEELLIANS TURN OUT FOR CHRISTMAS LIGHT SWITCH ON

On an unusually warm and dry November night nearly 100 Feltwellians turned out to watch the official lighting of the village Christmas tree. Councillor Storey had been invited to give the public address and he thanked the Parish Council for providing the tree saying that it was probably the best looking tree that the village has seen in recent years. He thanked all those involved in erecting and decorating the tree and the Tunnel of Light and said how lovely the church looked both inside and out.

Following the switch on attendees made their way inside the church where they enjoyed a free concert given by Mister G and Alisha in aid of the Food Pantry, an event coordinated by the Feltwell Community Group and the PCC.

The following two evenings saw Father Christmas taking centre stage at the annual Festival of Light which has now been running for 25 years at St Mary's. The church looked beautiful as thousands of fairy lights twinkled and flashed. The theme this year was '25 Years of Television' and all the entries showed great imagination and originality. Clearly, a large amount of hard work and a lot of time had been given to the design and decoration of the trees. Hot drinks, including the ever popular mulled wine were available as were both an adult and children's tombola,

Continued on page 27





Charity #: 1208763

**Veterans Central West Raynham SHQ,
5 Blenheim Way, West Raynham Business
Park, Fakenham, NR21 7PL**

The Veterans Voice project aims to help veterans and family members find how to access veteran organisations and support groups, such as breakfast clubs and social hubs, identify opportunities for social interaction with other veterans, and provide information about support resources.

Veterans Central, as part of the Veterans Voice project, will be running a monthly **drop-in hub** in Swaffham.

Come along for a FREE hot drink, cake, and a spot of chat and banter, or to ask question about veterans support.

Venue: The Regency Room, Swaffham Assembly Rooms, Swaffham

Tuesday 27th January 2026

Tuesday 24th February 2026

Tuesday 24th March 2026

Tuesday 28th April 2026

Tuesday 26th May 2026

Time: 10.30 – 13.00 hrs

Location: The Assembly Rooms are located in the centre of Swaffham and there is adjacent 2 hours free parking (but use machine to get a ticket). You are welcome to bring partners or carers.

More information? Contact: ops@veteranscentral.co.uk

Mobile: 0771 3860040



**A warm welcome from
St Mary's to our Services across the
Benefice.**

**The church is open every day from
9am until 4pm.**



Sunday 4th January	Joint Benefice Eucharist A Farewell to Juanita	10am	Feltwell
Sunday 11th January	Service of the Word	9.15am	Hockwold
Sunday 18th January	Service of the Word	9.15am	Feltwell
Sunday 25th January	Eucharist	9.15am	Hockwold

Other happenings at St Mary's Feltwell:

Food Pantry Open

Weds 9am-11.30am & Sat 12.00pm-1.00pm

**Every Wednesday come for a warm welcome, tea,
coffee and cake and good company.**

Internet available and help to use it.

Community Information Point.

Borough Services.



**A VERY HAPPY AND PEACEFUL NEW YEAR FROM
THE TEAM AT ST MARY'S**

and other activities such as, guess the weight of the cake and how much money in the jar. Two raffles were available, one to win an £83 bottle of whiskey and then the Grand Raffle with several excellent prizes.

The competition for best decorated tree was won, in the children's category by Feltwell Primary School and in the adult category by Angela and Michael for Strictly Come Dancing. Congratulations to both.

As the magazine is printed in B/W the photographs accompanying this article will not do the event justice but in the online version, available from mid January, they will be in colour.

MOBILITY AIDS

Want to bring a friend or relative to stay, need to take a mobility challenged person to hospital or on holiday. We have some mobility aids to help you. Short or long term use. Just give us a call or message us.

We can be contacted on Facebook, Messenger or mobile 07712578721 or by email mikegw15@gmail.com Mike & Brigitte Wilkinson 07799216693 (Feltwell Methodist Chapel)



Having a party?

Don't have enough plates, dishes, glasses or cutlery?
Contact Sue Garland 827029 or Chris Parker 827152.

St Mary's Church can loan you all of the above
(at least 40 settings)

All we need in return is a donation to St Mary's Church Funds and an understanding that you will pay for any breakages.

FREEDOM RECYCLING

Moving home, having a tidy-up, renovating your home or garden?

Then a skip might be just what you need!

Why choose Freedom Recycling?.....



We are your local, reliable, family run business (Est. 2005)

Our Domestic & Commercial use skips range from 4yd to 40yd roll-on roll off bins

Avoid the risk of fly tipping. Environment Agency Licensing means all of our waste streams are fully traceable

We give you the most Competitive Pricing - when you call us directly you get 'our' price, not a brokers!

Prompt & Friendly Delivery

Other Services we offer include:

Wait & Load ~ Farm Waste Recycling ~ Various Hire Durations on Request

We make contacting us easy too!



01842 828888



reception@freedomrecycling.co.uk



<https://freedomrecycling.co.uk/>



Messenger

CURIOS ARE BACK! No 8

All of these old curios and objects come from the collection of Paul Blackmur of Flitcham. The idea of a column in this magazine came from Robert Walden.

Answer to last month's Curio.



“Roll your own” cigarette machines are still in use today of course and as a boy, I used to marvel at the old men (it was mostly men!) who gently slid their tongues along an edge of one end of the paper and attempted to stick it to the other with a nice pencil shaped “round” for their next smoke—except its shape was anything like regular.

This gadget relied on the smoker buying a supply of neat paper tubes. The two brass sliders (shown just protruding from the main tube in the photograph) were slid into the main hinged tube which was then opened and the tobacco added into the void between the



PR BOWERS & SON FUNERAL SERVICE

1921 - 2021

**CHAPEL OF REST 2 METHWOLD ROAD
NORTHWOLD THETFORD NORFOLK IP26 5LN**

**24 HOUR SERVICE,
PRIVATE CHAPEL OF REST**

**UPHOLDING TRADITIONAL FAMILY
VALUES OF DIGNITY & RESPECT
FOR YOUR LOVED ONE'S**

TEL 01366 727432

TEL 07796 780270

PRIVILEGED TO SERVE LOCAL FAMILIES FOR 3 GENERATIONS

**VISIT OUR WEBSITE FOR SERVICES OFFERED AND PRICE LIST
WWW.BOWERSFUNERALS.CO.UK**

sliders. The hinged main tube was closed and the two tobacco filled sliders moved out from the tube and a paper tube passed over them. One slider could then be withdrawn back inside the main tube and the cigarette pushed free of the other slider with the user's thumb!

This Month's Curio.



Solid wood, polished and with tiny glass mirrors embedded on each side and along the top.

In Victorian

times most adults (and, sadly, a lot of children too) would have recognised this object immediately. What was its purpose?

Answer next month.

If you'd like to email me if you think you've worked out what this curio was used for my address is garlandp@btinternet.com. Please use CURIO in the Subject line.

If you get it right you can bask in the fame when I publish your name next month.

Paul

Feltwell Dispensary

NEW Opening Hours from 2nd Dec


Monday: 08:30-12:00, 15:00-18:00

Tuesday: 07:30-12:00, 15:00-19:00

Wednesday: 08:30-12:00, 15:00-18:00

Thursday: 08:30-12:00, 15:00-18:00

Friday: 08:30-12:00, 15:00-18:00

 **01842 829738 or 01842 828481**

You can order your medication or ask any queries regarding your medication online via our website:

www.feltwellsurgery.co.uk or by using the NHS App. We have a dedicated telephone number in place for our housebound patients to order their medication, which is open Monday to Friday between **10.00-12.00** and **14.00-16.00**.



Local Domestic Oil Boiler Servicing

Servicing Standard & Condenser Boilers
Annual Service with Tank Inspection &
Boiler Commissioning
Breakdowns, Maintenance & Repairs

Electrical Testing Specialists

Portable Appliance Testing
Fixed Appliance Testing
Full Reports, DRB Checked

WESTNORFOLKBOILERSERVICES.CO.UK

WWW.MAYESELECTRICAL.NET

**COVID-19: As an essential Business we are open
and operating with Covid-19 guidelines in place**

TEL: 01842 828129/MOBILE: 07791 204492

M J HAWES — Est 1988

Garden rubbish! You make it, we take it!

GARDEN CLEARANCE:

Soil, concrete, hardcore removal * Ponds emptied and filled
Sheds & greenhouses dismantled & removed * Fence lines cleared
Shrubs, trees, hedges grubbed up * Full garden reinstatement

Prompt, reliable service.

Fully insured and licensed to carry and process garden waste.

Waste transfer certificate issued with every removal, large or small.

Tel: 01842 878784

Mobile: 07951 206602

Email: mjhgs88@gmail.com

LATEST CONSUMER ALERTS AND TRADING STANDARDS NEWS

Scam Alert - Online surveys to receive high value items

We are warning residents about numerous fake emails circulating claiming 'you have been chosen' to receive a high value item in exchange for completing an online survey.

The emails, which are often branded to appear as if they come from well-known companies, contain a link to the survey which it states is required to 'claim' your item.

Recent examples have included:

- Emails claiming to be from Boots saying you have been 'selected by the Boots Reward Team' to receive an 'Oral-B Dental Kit'
- Emails claiming to be from John Lewis saying you are a 'VIP winner' offering a 'Jo Malone reward'
- Emails claiming to be from Halfords stating you can 'claim your free Michelin car jack'
- Emails claiming to be from the NHS stating you are 'today's winner' of a 'Medicare kit'
- Emails claiming to be from Lidl saying you can win 'the ultimate Monsieur Cuisine'

Anyone following the links will be taken to a well-designed website carrying the same branding as the email which will attempt to gather personal and financial details as part of you claiming the non-existent prize.

Scam Alert - Telephone cold calls claiming to be from 'Arthritis UK'

We are highlighting a warning from Arthritis UK about telephone cold calls.

This follows reports to them about calls claiming to be from them offering 'help to complete benefit forms' in return for a fee.

Arthritis UK state, 'This activity is not being carried out by or on behalf of Arthritis UK so please be vigilant'.

We always advise people to be very wary of claims made during telephone cold calls. If you receive this or a similar call our advice is **do not** interact with the call and **hang up**.

Scam Alert—WhatsApp & Text Message 'family member' scam messages

We continue to receive reports from Norfolk residents of WhatsApp and text messages where fraudsters attempt to impersonate family members.

The message will often start with a generic greeting (Hello Mum/Hello Dad) or will say that this is a new mobile number (This is my new number, Dad). The messages will then say that you should save the number to your contacts. Following further messages the fraudsters will then ask for money usually

MISSED APPOINTMENTS @ THE SURGERY 2025

November 2025 saw **59** appointments missed, that's **43 less** than in October. This represents a loss of medical care to the tune of **£1770** for the month and **716** minutes of wasted time.

So far this year **787** appointments have been missed representing a total of **23,610** of medical care lost. These appointments could have gone to someone else in need.

If you cannot attend your appointment, please cancel it.

Lead Times for Prescriptions

PLEASE ALLOW **5** FULL WORKING DAYS FOR YOUR MEDICATION TO BE READY

Ordered

Sat, Sun & Mon
Tuesday
Wednesday
Thursday
Friday

Ready for collection

Following Tuesday
Following Wednesday
Following Thursday
Following Friday
Ready a week Monday

ART FOR PLEASURE

Every Thursday 10.30 am – 12.30pm. £4 per session at Weeting Village Hall.

Contact Beryl Pountney, Secretary, for details on
01842 828750

The kettle is always on.



When writing an essay in an examination hall it is easy to make mistakes...

Some people can tell the time by looking at the sun, but I have never been able to make out the numbers.

As she went through he wardrobe she found a scorpion in her drawers. She rose quickly.

connected to the new number stopping them from paying 'an urgent bill' etc. The fraudsters will then provide bank details for the payment to be made to, with some coming back with further demands for money.

If you receive a suspicious message (even if you think you know who it is from), calling or requesting a voice note is the fastest and simplest way to check someone is who they say they are.

- **Stop:** Take time before you respond. If you use WhatsApp make sure your two-step verification is switched on to protect your account, and that you are happy with your privacy settings.

- **Think:** Does this request make sense? Are they asking for money? Remember that fraudsters prey on people's kindness, trust, and willingness to help.

- **Call:** Verify that it really is your friend or family member by calling them directly or asking them to share a voice note. Only when you are 100% sure the request is from someone you know and trust, should you consider it.

You can report spam messages or block a sender within WhatsApp. Press and hold on the message bubble, select 'Report' and then follow the instructions.

Also remember to **never** share your account's activation code (that's the 6-digit code you receive via SMS).

The National Trading Standards Scams Team has launched a new app called **Friends Against Scams**. The app currently offers three key features:

1. Scams awareness training covering doorstep crime, telephone fraud, mail fraud, and how to identify a potential scam victim.
2. Image and screenshot analysis: users can upload screenshots or photos of suspicious emails, texts, or letters, and the integrated Ask Silver AI will provide a report on the likelihood of it being a scam.
3. Website checking tool: users can submit a URL to the integrated Ask Silver AI scams checker to assess whether a website is trustworthy.

To find the app search 'Friends Against Scams' in your app store today. It's available on both Apple and Android.

Visit the Friends Against Scams website at www.friendsagainstscams.org.uk/

What follows I received from Amazon towards the end of November and after the December magazine had gone to the printers. I believe that the advice about recognising Amazon related scams is still pertinent to the January sales and, therefore, I reproduce it here.

As the busy shopping season approaches, stay informed with these tips to help recognize impersonation scams - when a scammer pretends to be a trusted company and reaches out to try to get access to sensitive information like personal or financial information, or Amazon account details.

Do you feel modern technology is leaving you behind?

Would you like to brush up your skills?

If so, why not drop into the sessions below?



Extra sessions added for 2026:

23rd January

5th February

10-12pm at St Mary's church.

Refreshments provided.

- Do you need to book appointments, buy things online and apply for jobs, but you've run out of credit and your phone screen is too fiddly?
- Have you got a smartphone, but think you might not be getting the best out of it?
- Do you wonder if you're missing out because you're not on the internet?
- Are you worried about staying safe from online scams?
- Do your kids need to do their homework, but you haven't got a laptop or the internet at home?

Tech Skills for Life is here to help!

Our friendly Community Tech Coaches can help you with laptops, tablets and data and advice about affordable broadband. We can also teach you new skills that will make tech easier to use.

Community Tech Coaches can:

- Give you the skills and confidence to be safe online and use your tablet, laptop, or smartphone however you want.
- Help you get access to a smartphone, laptop or tablet at no cost to you.
- Help you get free mobile data or a cheaper broadband tariff.
- Teach you new skills and suggest useful things like classes or social groups.

Get your tech skills sorted, make your life easier, and get in touch today.

Call 01485 536420 or 01493 448246, Monday to Friday from 9am to 5pm and speak to a Community Tech Coach, or leave a message, and we'll call you back.

If you're online already, fill in our contact form: www.norfolk.gov.uk/TechSkillsForLife

Tips to help stay safe:

- Always use the Amazon mobile app or website for all your shopping needs, including customer service, account changes, delivery tracking, refund status.
- Remember, Amazon will never ask you to make payments or to provide payment information (including gift cards or wire transfers) for products or services over the phone.

Consider setting up 2-step verification when available to your online accounts to help prevent unauthorised account access. You can set up 2-step verification at amazon.co.uk/2SV.

Save time and stay secure using a passkey. It's a safer way to sign in than using passwords and it works with the same face, fingerprint, or PIN you already use to unlock your device. Set up a passkey at amazon.co.uk/passkey.

Scammers might try to create a sense of urgency to persuade you to do what they're asking. Be careful any time someone tries to convince you that you must act now.

Example impersonation scam tactics that you could receive:

- Fake messages claiming to be about delivery or account issues.
- Third-party social media posts and ads with deals that seem too good to be true. Shop directly on our website or mobile app for authentic offers.
- Messages through unofficial channels asking for your password or payment information.
- Unfamiliar links asking you to verify your account credentials through fake or phishing websites. Amazon will **never** send emails asking customers to verify their account credentials.
- Unsolicited calls claiming to be from tech support or other agencies.

Reporting scams

Reporting scams you receive helps us continue to build up intelligence on the scammers and how they target people.

If you have received a telephone cold call which you believe to be a scam or think you have been a victim of an online scam you can report it to us via our partners the Citizens Advice consumer helpline on freephone **0808 223 1133**.

[Citizens Advice consumer service website](https://www.citizensadvice.org.uk/consumer/scams)

(<https://www.citizensadvice.org.uk/consumer/scams>)

If you've been the victim of an online scam you can get advice and support from Citizens Advice Scams Action: 0808 250 5050 (freephone)

You can also report Frauds, Cyber Crime, Phishing attempts, suspicious emails to Action Fraud, the National Fraud & Cyber Crime (NCSC) by forwarding it to report@phishing.gov.uk.

You can report suspicious text messages received by forwarding them to **7726** a free service for you to use to report suspicious texts or calls you might receive on your mobile.



NEED A WILL?

NEED PROBATE?

NEED LASTING POWERS OF ATTORNEY?

FUNERAL PLANS?

Kerland Pitman Ltd are a family run company established in 1990 with offices in Braintree, Dagenham, Chadwell Heath and are now expanding into the Norfolk / Suffolk area.

We are experts in Estate Management and offer a home visit service at no extra cost.

Call us on: - **0208 598 8022**
0208 590 0776 to book an appointment
07710 825253

An independent and family company with a long established history, founded by David Turner in 1960 and now run by his daughter, Lydia.

Providing a transparent and tailor-made service to every family at a time when it matters most.



Thetford
15 Old Market Street | Thetford | IP24 2EQ
Telephone: 01842 761333
Email: thetford@turnerfunerals.co.uk

**24 HOUR
SERVICE**

www.turnerfunerals.co.uk

Brandon
2A Thetford Road | Brandon | IP27 OBS
Telephone: 01842 811245
Email: brandon@turnerfunerals.co.uk

Breckland Branch



A few weeks ago we were contacted by a cat owner whose cat had had a litter of kittens, and she asked if we could take the kittens. They were 5 weeks old.

I took the 5 kittens into my home and at the same time we booked the mother cat in at our vets to be neutered. It was about a week later that the mummy cat went to our vet to be neutered. As is routine, the cat was first blood tested for Feline Aids and Feline Leukaemia. Sadly she tested positive for feline leukaemia and had to be put to sleep. The owner was informed.

There is no cure for feline leukaemia, and the cat would eventually become very poorly and die a horrible death. The only thing that saves a cat from feline leukaemia is the vaccine, but sadly this cat was not vaccinated.

It put us in an awkward position with her kittens. We did a lot of research and it appears that the kittens had a 95% chance of contracting the virus, probably in the womb. The vaccine was too late for them now, so we made the heart breaking decision to have the kittens put to sleep. It's hard for any fosterer to have to take the kittens to the vet, knowing they would not be coming back again and having looked after them for a week. They were now 6 weeks old.

The other problem was that the cat owner had another 3 cats in her care, one of which was a pregnant female. The chances are that all her cats would be infected with the virus. Not only is the virus transmitted by sexual contact but also from saliva from sharing food bowls.

We are constantly advocating neutering cats and offer help with the cost. And the best thing you can do for your cat is to get him or her vaccinated. The virus can be transmitted if cats get into a fight and blood is shed. All this heartbreak could have been saved if the owner had asked for help in getting her cats neutered.

Pet insurance is something that we advise all cat owners consider

for their cat. We know that vet bills are often unexpected and can mount up over time, so having a good policy will really combat the worry of being able to afford their care, whether it is a one off misadventure or a longer term illness. On a daily basis we see the heart wrenching decision some cat owners face regarding the treatment for their cat, but with appropriate pet insurance, we can hopefully ensure that any treatment decisions are made on the basis of need rather than cost.

If you need advice or help with the cost of neutering, please call us on 01842 810018

Rita Thompson.



The Food Pantry, Feltwell

WHO ARE WE?

We are a group of volunteers who have set up a small non-profit shop of greatly reduced prices to help with the high cost of living for the local villages, as we are a rural community with no supermarkets nearby.

We run a membership scheme for a one-off charge of £3.50

For that we supply free fruit, vegetables & bread depending on availability & also the ability to shop with us at vastly reduced prices. Food donations are gratefully accepted, please leave in the Food Pantry area in St. Mary's Church, Feltwell.

We can also provide crisis packages for those in need, free of charge with the help of public donations.

You can find us at St Mary's Church, Feltwell.

OPENING TIMES:

Wednesday 9AM – 11:30PM

Saturday 12:00PM – 1:00PM

**For more details visit our Facebook Page or
call 07454 259280**

£5 Million For New Special Educational Needs School in Downham Market

From : terry.jermy.mp@parliament.uk

Having lobbied the Secretary of State for Education and other Government Ministers on the urgent need for a new special educational needs school in Downham Market since the election, I was thrilled with the recent announcement that the Government will be investing £5 million in funding to make this proposal a reality.

Located at Ryston End in Downham Market, the funding seeks to address long-identified gaps in provision for children with additional educational needs in the West of the county and would cater for up to 100 pupils.

Norfolk County Council will receive the £5 million in funding from the Government for the Ryston End proposal, and a further £8 million in funding for a project located in the East around Great Yarmouth.

The Council will be given the choice to create new permanent facilities or use the money to fund additional places in mainstream settings. I have confirmed that I would prefer for the site at Ryston End to be utilised, given the distinct lack of special educational needs services in the West of the County and the long travel distances for families.

As one of only two MPs to employ a SEND Specialist Caseworker, I am acutely aware of how much the SEND system is in crisis.

This funding shows the Government's commitment to solving the SEND crisis and ensuring children and young people with SEND get the education and support they need. The new special educational needs school will help repair the broken system and be a modern and supportive setting for children and young people with SEND and their families.

The Ryston End site was once the Sixth Form linked to Downham Market High School but has sat empty and boarded up for a number of years.



ALL OF US AT THE WELLINGTON
WISH YOU A VERY



Happy New Year

THANK YOU FOR YOUR
SUPPORT IN 2025!

HERE'S TO A GREAT
2026!

Here's A Little Clue To What Is Happening In 2026

Meet
Up
Mondays™



Board Game
Group

Charity
Events



Poker
Night



LIVE
MUSIC

Drinks
Festivals



Food
Trucks

Breakfast



Men's





This announcement follows the four SEND Roundtables I held in the Autumn for both families and schools, in addition to two SEND surveys. The results of the surveys will form a forthcoming report which will focus on the impact of rurality on SEND and outline further recommendations to the Government to help fix the SEND crisis.

This funding forms part of a landmark £3 billion government investment to make sure more children can go to a brilliant school closer to home and enable children with additional needs to achieve and thrive.

Should you or someone you know need SEND support, please get in touch: terry.jermy.mp@parliament.uk



If you'd like to submit a **FOOTNOTE** of your own, be it a quip, a fact, an idiom, whatever you feel would be suitable, please send your **FOOTNOTE** to Paul at garlandp@btinternet.com or post it through my letterbox.

THE BOOKCASE

In the Methodist Chapel Entrance

OPEN 7 DAYS A WEEK, dawn til dusk (usually) including **Children's Bookcase** with books to help children learn to read and books for Teens.

Christmas books are available. Please keep them coming. Pass on those you've read and take something new.

Hundreds of books 'Factual' & 'Fiction' for your every moment.



WINTER EVENT - St Mary's Church, Wednesday 7th January
2026, 10 am to 12 noon

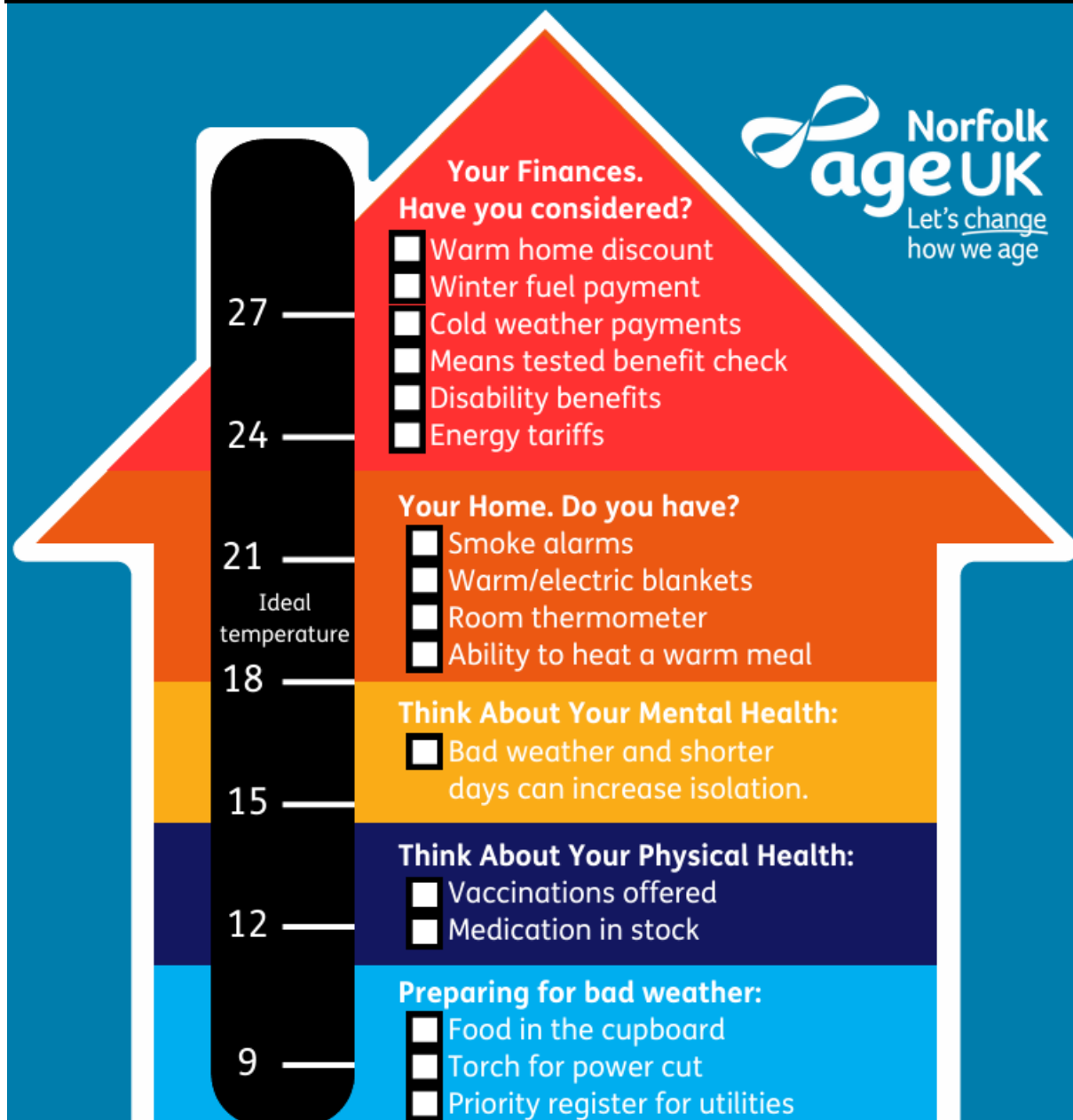
Following the success of this year's Winter Event, Feltwell Parish Council is holding another on Wednesday 7th January 2026 in St Mary's Church, Feltwell from 10 am to 12 noon.

This will be held in conjunction with Age UK, King's Lynn & West Norfolk Borough Council and Feltwell Community Group and will provide information and advice on keeping warm this winter and any help people may be entitled to.

Representatives from Careline, the Caring Together Charity and Feltwell's British Legion will also be on hand to offer advice.

Refreshments and cakes will be on sale too.

EVERYONE IS WELCOME!



NEW YEAR, NEW ME LOGISTICAL

This Logistical puzzle was designed by Chris at the Wellington.

The solution is on p73.

	Jonathan	Bridget	Christina	Abraham	Cereal Bar	Orange	Gel Pouch	Chocolate Bar	30 Minutes	45 Minutes	1 Hour	1 ½ Hours
Cross training												
Rowing												
Weights												
Swimming												
30 minutes												
45 minutes												
1 Hour												
1 ½ Hours												
Cereal Bar												
Orange												
Gel Pouch												
Chocolate Bar												

Four friends join the gym in January, match them up to their activity, the time spent and snack after.

CLUES

1. The Swimmer spent twice as long as the Rower at the gym.
2. Jonathan ate the Cereal bar after his Hour in the gym.
3. Christina didn't do weights, she did have a Chocolate Bar, she spent 30 minutes at the gym.
4. The person who had the gel pouch did 45 Minutes of Cross Training.
5. Abraham did a PB weightlifting.

The Atmere Charity

The Charity awards grants to individuals who are in conditions of need, hardship or distress by making grants of money for items, services or facilities designed to reduce the need hardship or distress.

It also helps for severe chronic illness in younger people.

Applications for assistance must be made to: The Atmere Charity Secretary, 16 Falcon Road, Feltrwell, IP26 4AJ giving as much detail as possible about the need, hardship or distress being experienced.

The applicant **MUST** be a Feltwell resident.

CENTRAL GARAGE

MOT's • Servicing • Repairs

Air Conditioning Service

Petrol • Diesel

Exhausts • Tyres

Tracking • Kindling

44 HIGH STREET, FELTWELL.

Telephone 828354



G J Waters

Small Groundworks

Foundations, Concreting, Drainage, Paving,
Mini Digger, 3 ton Digger, Transit Tipper,

Aggregates Delivered -

Sand - Stone - Hardcore

Tel: (01842) 827237

Mobile: 07702 408869



All Aspects Of Carpentry & Building

Kitchens - Doors - upvc - Roofing - Fencing

Renovations - Extensions - New Builds & Lots More

NVQ Level 3 Qualified Carpenter

For A Professional Friendly and Reliable Service Call Dean

Mob: 07825700575 Tel: (01842)827645

Email: DM.Carpentry@yahoo.co.uk

WORD SEARCH

Submitted by Mrs J. Clements.

This month our word search features **TREES IN THE UK.**

Find the words from the list below. They run vertically, horizontally, diagonally, backwards and forwards but always in a straight line.

W	E	R	O	M	A	C	Y	S	A
I	B	P	E	R	O	H	T	S	L
L	A	I	S	U	R	P	Y	C	D
L	H	N	R	C	H	I	A	P	E
O	X	E	T	C	R	P	E	A	R
W	L	E	Z	A	H	A	B	Y	B
R	E	S	S	L	H	O	D	J	L
A	R	M	I	B	C	K	G	E	A
S	N	A	W	O	R	T	P	L	C
H	D	P	R	O	I	Y	D	D	K
M	U	L	P	K	B	E	C	O	T
A	I	E	Q	E	R	W	T	U	H
D	F	E	L	L	E	A	U	G	O
C	O	M	P	I	V	X	N	L	R
G	O	A	P	P	L	E	T	A	N
H	Y	M	Q	K	I	B	S	S	Y
S	O		M	A	S	I	E	F	L
P	U	R	J	O	T	R	H	I	L
R		T	N	G	N	K	C	R	O
U	U	V	P	B	E	B	O	C	H
C	Y	P	A	Y	E	C	O	C	B
E	A	S	A	B	L	A	R	X	O
C	H	E	R	R	Y	A	M	F	A
S	A	A	R	T	L	P	C	Y	T
H	E	M	L	O	C	K	H	U	E
T	U	N	L	L	A	W	B	I	E

*There is
ONE
extra
word in
the list
that is
NOT
found
within
the grid.*

*The solution
is on page
78*

ALDER ALDER APPLE ASH BIRCH BLACKTHORN CEDAR
CHERRY CHESTNUT COMMON BOX CYPRESS DOUGLAS FIR ELM
EUCALYPTUS HAZEL HEMLOCK HOLLY HORNBEAM LARCH MAPLE
OAK PEAR PINE PLUM R OWAN SILVER BIRCH SPRUCE
SYCAMORE WALNUT WILLOW YEWE

CAROLS BY CANDLELIGHT



Despite the wet weather we had a very good congregation in St. Nicholas' Church on 7th December for the Annual Carols by Candlelight.

Janet Tandon officiated and Sybil Cooper played for us again, which she always enjoys doing.

Mark Lilley looked after the oil lamps which always takes some time to do. We are most grateful to him.

Mike Wilkinson provided a sound system, which was such a help, he also did a reading along with Brigitte, Janet, Pam and Marion.

Our thanks go to the ladies who decorated the church and to Mark Allum who very kindly stepped in and printed all the service sheets.

The collection at the end raised £150.00 for the Historic Churches Trust.

We hope to see you all next year. In the meantime we do hold an Afternoon Tea event in June, so please look out for the date.

With regards

Marion Lucas on behalf of the Historical Society.

NEW

BADMINTON AT ST. MARY'S

NEW



Wednesday — 1pm to 8pm

Saturday — 9am to 8pm

If interested in playing please email:

Stmarysbton@gmail.com. Please include your mobile number so you can be added to group chat.

Full instructions on how the court is booked will be emailed to you.





Welcome to the New Year.

In January I am busy ordering seeds to grow for the year. I think back to what was successful in my garden the year or two before, and then order the basics. My cucumbers were very prolific last year, the best year ever. I must have had well over fifty fruit off the four seeds I grew. The last ones were picked in late October. The neighbourhood benefitted from this abundance. Also my plum and cherry tomatoes grew well. We will be eating tomato sauces throughout the winter in various meals. I shall also be re-planting either first or second early potatoes in my material pots again. There is nothing quite like fresh food you have grown yourself.

As for the flowers during last year, there were many which did not like the fierce heat, however much I watered them from my tubs. The begonias did well because they were in a shady corner. Although I watered the fuchsia, they failed to flower fully until late September, early October as the weather turned cooler and more moist. We all have successes and failures as gardeners, a bit like life itself. What we don't do though, is give up. We meet each new year with hope that our crops will grow well during this year.

During 2026 Feltwell in Bloom will continue to grow with your help. The date of our next meeting will be Tuesday 17th February at The Wellington. Teas and coffee will be available with time to chat before and after the meeting, which begins at 7pm. Feel free to come and join us. You do not have to be an expert – none of us are. We share a common interest in making the village look beautiful for both residents and visitors. Everyone is welcome.

Contact us on the following platforms:-

Facebook - Feltwell in Bloom

Email – feltwellinbloom@yahoo.com

Or phone Rita on 07785345614

Walking on Air

07596157826

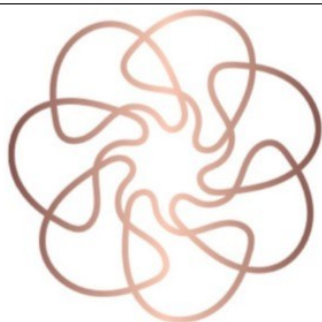
D.T.Byrne MCFHP MAFHP

Walking-on-Air, Unit 4, Harvey Adams Enterprise Centre, Wimbledon Avenue, Brandon, Suffolk, IP27 0NZ

Foot Health Professional

Long nails, Corns, Callus, Hard skin, Cracked Heels and Fissures, Fungal Nails, Ingrowing Toe Nails (Home or Clinic visits available) Diabetic Foot Care

Gift vouchers available



NE BOOKKEEPING & ACCOUNTING

Local Accountancy Practice Providing Services at an affordable rates for sole traders and businesses.

Our Services include
Bookkeeping
Self Assessment Tax returns
VAT Returns
CIS
Payroll Services
Year End accounts & Corporation Tax

Benefits of working with us

- ✓ Saving you time and money
- ✓ Remote working with cloud software
- ✓ Increased business performance
- ✓ Services tailored to you business needs

Why pay for employed staff when we can carry out the work for you. Let us take away the stress!

Find out more at www.ne-bookkeeping.co.uk

☎ 01366 691112 📱 07539937884

✉ enquiries@ne-bookkeeping.co.uk



***FELTWELL METHODIST CHURCH,
COMMUNITY HALL & GARDEN***

Free Wi-Fi every day our doors are open—Mon/Tues/Wed/Thurs.

Want help filling forms, benefit claims, housing forms, driving licence renewal, powers of attorney, etc. come into a quiet space, grab a cuppa and have help on hand. Look for our open sessions or **give us a call to arrange to meet.**

GET ACTIVE IN FELTWELL MONDAY & TUESDAY CLUB

Methodist Hall, Bell St, Feltwell

Table Tennis, Pool, Darts, Snooker, Skittles, etc

Monday: 7-9pm Tuesday 1.45-3.45pm

Or just come for Tea/Coffee and chat

Your first steps to improve your fitness & wellbeing

First week free—then only £3 a session

Join us on Wednesdays for a cuppa while we pot or potter! Gardening is recognised as a calming and relaxing activity.



Does anyone recognise
this?.....>>>>>>>>>

Well this is the beginning of a project by the Tuesday Club. This started as a Table-Tennis Club, but has expanded to include pool, darts.

Hopefully this project will be completed soon after Christmas, but what is it? Slates are on, Baize ready to lay.

Look out for news on our notice board about when play times have been planned. For those viewing in black and white, the brown ball is behind the green ball!!!

Continued on page 55

Continued on page 55



Your Good Health

by Dr Ian Nisbet

Well, here we are in another year. I hope you all had a lovely Christmas and I wish you a happy and healthy New Year. Just before Christmas, I competed my daily radiotherapy for prostate cancer. It was quite a performance, having to drive to Worcester before presenting with an empty bowel and a full bladder at the appointment time. There is no need to elaborate and I shall leave the details to your imagination. Suffice it to say that the process involved a daily enema before travel (a bit risky) and then drinking more than a pint of water at the hospital before the appointment. The first day, when my appointment was early in the afternoon, I messed it up. I was passing the hospital canteen when I realised I was hungry (a good rule in life is never to pass a canteen), went in and had a massive plate of chicken curry and rice before

drinking my big bottle of water. I lay on the radiotherapy couch and got slung out because my bladder was empty. The rice in my stomach had absorbed all the water so it never made it to the bladder. So, I had to drink a lot more water and return for the therapy half an hour later with my tail between my legs! It is necessary to have 200ml in the bladder before the test and they can measure the volume to the last ml.

The next day, another afternoon appointment. Determined to do the right thing, I rocked up with my bladder full to bursting. Brilliant, 800ml! Unfortunately, they only want 200ml so I had to slope off and lose 3 paper cups full before they could do the therapy.

The next week, I requested morning appointments and was awarded 8am each day for the remainder of my treatment.

Much better – get up at 5.30am and arrive at the hospital at 7am, allowing an hour to do the water drinking. Home by 10am. Success at last. Well, 65% success for the duration of my therapy. Apparently, 60% or more of men have trouble fulfilling the criteria.

Leaving the house at 6.15am every morning, I soon became aware of all sorts of lights bouncing in the air, some lights 3ft above the ground, some 6ft above the ground, other lights bouncing along the ground and reflective ribbons at 45 degrees to the ground. Yes, you have worked it out – nocturnal dog walkers. I had a quick chat with some of them and, before long, just by looking at the approaching lights, I could tell who was approaching, the breed of their dog and where they all lived. One man works from home and walks his 2 retrievers at 6am, 2pm and 8pm. When I see them in daylight, they always cross the road to see me. One of the dogs is so pleased to see me that he barks non-stop and the other just lies down. Trouble is – the barking dog lets rip even in the dark, waking all the neighbours. If you Google dog

walk in the dark you will find all sorts of kit.

I have found some good jokes to lighten your mood in dark January:

In a farm field by a river, a naughty cow sat smoking “weed” (Marijuana). A beaver swam up, borrowed the joint, inhaled and then exhaled straight away. “No,” said the cow, “you have to inhale and then hold the smoke in for maximum effect. Have a drag then swim down the river before you return here and exhale.” The beaver swam off but he felt most unwell, dizzy and nauseous, so he flopped onto the bank. A hippopotamus approached, found out what had happened and wanted to try some of the weed. The cow told him to cross the river and ask the cow for a joint. The hippo swam across the river and emerged next to the cow, waking her up. She opened her eyes and screamed, “Beaver, for goodness sake, let some air out!”

This is a clever variation on a couple of old jokes. A bear walked into a bar and noticed that the bar tender looked really tired. The bear

SUTTON

ELECTRICAL SERVICES

DOMESTIC • INDUSTRIAL • COMMERCIAL

✦ NEW BUILDS

✦ FULL REWIRES

✦ EXTENSIONS

✦ HEATING SYSTEMS

✦ TESTING & INSPECTION

✦ PAT TESTING

✦ ADDITIONS & ALTERATIONS

Friendly & Reliable Service

01842 815174 Find us on

07734 902900



alan@suttonelectricalservices.net



VOIGHT CARPENTRY & HOME MAINTENANCE

- ◆ City & Guilds
- ◆ Institute of Carpenters
- ◆ Over 40 years of experience
- ◆ All general woodwork:-

Door Hanging - Cupboards -
Shelving - Wardrobes - Wall
Panelling - Decking -
Repairs & Maintenance -
Painting & Decorating

**Please call Graham
for a free quote**

07526058078

GRAHAM.VOIGHTCARPENTRY@GMAIL.COM

@VOIGHTCARPENTRY

To advertise in this space for just
£3.00 per month, please contact

Jean on

01842 827710

or email

jean.winter@gmx.com

Suffolk Maids

The Housekeeper Register

Domestic Cleaning & Ironing Service – Est. 2006

We use our register of reliable local housekeepers to provide
cleaning and ironing services to homes regularly each week.

Personal Housekeeper

Fully Insured

All for less than £16 per hour.

Tel: 01284 811777

www.suffolkmaids.co.uk

Looking for work? Contact us today.

Taylors Solid Fuels LTD

Family run since 1946

Regular fortnightly Solid Fuel
deliveries in your area.

Competitive prices and a full
range of products.

“Don’t Shiver We Deliver”

Quality top soils and aggregates.
Bulk bags and Tipper loads
from 1-20 tonnes

Tel: 01842890568

or visit

www.taylorssolidfuels.co.uk

sympathised and the bar tender told him that he had endured a terrible day before asking what the bear would like to drink. The bear remained silent for a couple of minutes before asking for a beer. "Why the long face?" asked the bar tender. "Don't you mean, Why the big pause?" asked the bear. "Oh yes," sighed the bar tender "Like I said, it has been a rough day."

A Sunday School teacher noticed a boy making faces to the others in the playground. The teacher thought for a bit and then said to the boy, "Johnny, when I was a girl, I was told that if I made ugly faces, the wind might change and my ugly face would be permanent." Johnny thought for a bit before

commenting, "Well, miss, you can't say you weren't warned!" Another version of the bitch in season joke: A little girl asks her Mummy for permission to take her dog for a walk. "No, darling, Lulu is on heat." "What does that mean?" "Ask your father." Father took a petrol-soaked rag and rubbed it on Lulu's rump. "Now you can take Lulu for a walk, Don't let her off the leash and you'll be fine". A few moments later, the little girl came home without her dog, holding the lead. "Where is your dog, darling?" "Oh, she ran out of petrol after a few minutes so the neighbour's dog is giving her a push home."

Take care of yourselves and have a Happy, Healthy New Year
Ian Nisbet

SUNDAYS – 11.00am – Noon – Community Fellowship group

How are our lives challenged? What have we done?

How have we got through the last week/month?

How do we share God's Love with our community?

Songs, Prayers & Refreshments available.

Sunday 18th January we welcome our American friend Mr Monroe from Thetford to lead our fellowship.

Give us a call or message us or one of our members.

Find us by scanning this QR code on your Mobile Phone.

We can be contacted on Facebook, Messenger or mobile 07712578721 or by email

mikegw15@gmail.com Mike & Brigitte Wilkinson 07799216693



B.R LANDSCAPES

EST 1986



- Garden and site clearance
- Turf supplied and laid
- Hedge removal - planting
- Fencing supplied and erected
- Trees - shrubs pruned or removed
- Digger and dumper with operators
- Stump grinding - Sleeper beds
- Gravel driveways and paths

www.brlandscapeswestnorfolk.co.uk
MOB : 07774724366 / 01553849802

Pure Water Clean

PURE water window cleaning **Gutter vacuum & cleaning**

Soffit & fascia cleaning **Solar panel cleaning**

Conservatory roof cleaning **Conservatory Valet**

Fully insured, reliable, Feltwell resident

Please call Craig for a free no obligation quote

07743 595424



The speaker for our December meeting was Kevin Boardman who told us all about Katherine Johnson.

Katherine was a mathematician of the highest calibre, who worked for NASA and received the Congressional Medal of Honour from President Obama in 2015. She was also the main subject of the film 'Hidden Figures'.

Katherine was born on 29th August 1918 in White Sulphur Springs, West Virginia. Born Katherine Coleman to Joylette, a teacher and Joshua a farmer/labourer. She was the youngest of four.

From a very early age she showed an interest in numbers and at the age of 10 she joined a segregated black high school. Eventually she moved on to West Virginia State College where she studied Maths and French. She worked under Professor Clayton who added new mathematics courses just for her. She graduated top of class in 1937, with degrees in



Photo taken in 1983

mathematics and French, at age 18. She took on a teaching job at a segregated black public school in Marion, Virginia and married James Goble in 1939 and had three daughters. James developed brain cancer. Life was hard.

At a family gathering she discovered that NASA (NACA back then) were recruiting people who were very good at computing, meaning calculating on paper and black boards using your brain, chalk and perhaps a slide rule, doing the complex calculations as required by the space programme. (Computers hadn't arrived at this time.)

Katherine joined NASA in 1953 but even there she faced institutionalised racism. If she needed to use the toilet she had to go to a different building as the toilets in her building were for whites only. She was promoted at the end of her second week(!) because she had shown that she was highly capable and could do things the others couldn't. This didn't make her particularly popular with the white males working around her. Initially, she was put in charge of decoding 'black box' material from crashed aeroplanes. Despite her obvious ability with advanced mathematics she was, being a black woman, excluded from meetings at which she could have made vital input. This she found very frustrating and through a combination of stubbornness and determination she was eventually

J M Harris EST. 1996

LANDSCAPES CONSTRUCTION

Fencing, Patios, Paving
Driveways, Groundworks
Landscaping, Tree Surgery
Turfing, Artificial Grass
Property Maintenance & Repair

For Friendly Professional Service

CALL 01842 828114

www.jmharrislandscape.com

jmharrislandscape@outlook.com

Georgina Sims

07913 976786



Desktop, Laptop, iPad & Mobile Phone Setups
Hardware Installations
Virus Checks & Removal
Internet Connections
Internet Security

Training Sessions
Repairs & Upgrades
Program installations
Device Maintenance
Troubleshooting

Peckhams Plumbing

NO Call Out Fees
Fully Qualified
& Insured



John Peckham
Friendly, Local Plumbing
& Heating Engineer

- ✓ Full Heating Systems
- ✓ Heating System Updates
- ✓ Radiator Changes
- ✓ Oil Tank Changes
- ✓ Fully Fitted Bathrooms
- ✓ Leaks & Repairs
- ✓ Boiler Replacements
- ✓ Boiler Services

Tel: 07534 892411

allowed in. Three years after joining NASA James died in 1956.

In 1955 it was announced that the USA would launch satellites. Four days later the USSR announced the same and on 4th October 1957 Russia won with the launch of Sputnik. The space race had begun and the “Mercury 7” (astronauts) were recruited. In 1959 Katherine married James Johnson, a veteran of the Korean War; the pair were married for 60 years until his death in March 2019 at the age of 93.

Katherine calculated the trajectory for the 1961 space flight of Alan Shepard, the first American in space. She also calculated the launch window for his 1961 Mercury mission. She plotted backup navigation charts for astronauts in case of electronic failures. When NASA used electronic computers for the first time to calculate John Glenn's orbit around Earth, she was called upon to verify the computer's numbers. It is reported that John Glenn had said, “If Katherine says the numbers are good then I’m ready to go.”

In September 1962 President John F. Kennedy declared that America would put a man on the moon by the end of the decade. Katherine helped to calculate the trajectory for the 1969 Apollo 11 flight to the Moon. In 1970, she worked on the Apollo 13 Moon mission. When the mission was aborted, her work on backup procedures and charts helped set a safe path for the crew's return to Earth, creating a one-star observation system that would allow astronauts to determine their location with accuracy. In a 2010 interview, she recalled, "Everybody was concerned about them getting there. We were concerned about them getting back." Later in her career, she worked on the Shuttle program and a human mission to Mars.

Katherine died at a retirement home in Newport News on February 24, 2020, aged 101. Her impact and achievements, as a black woman, on not only the space programme but also on segregated and racist America were immense.

The Men’s Breakfast Club usually meets on the 1st Saturday of the Month at The Wellington in Feltwell at 9am. It costs £8.00 per person to attend which includes a talk, tea or coffee and a full English breakfast which never fails to please.

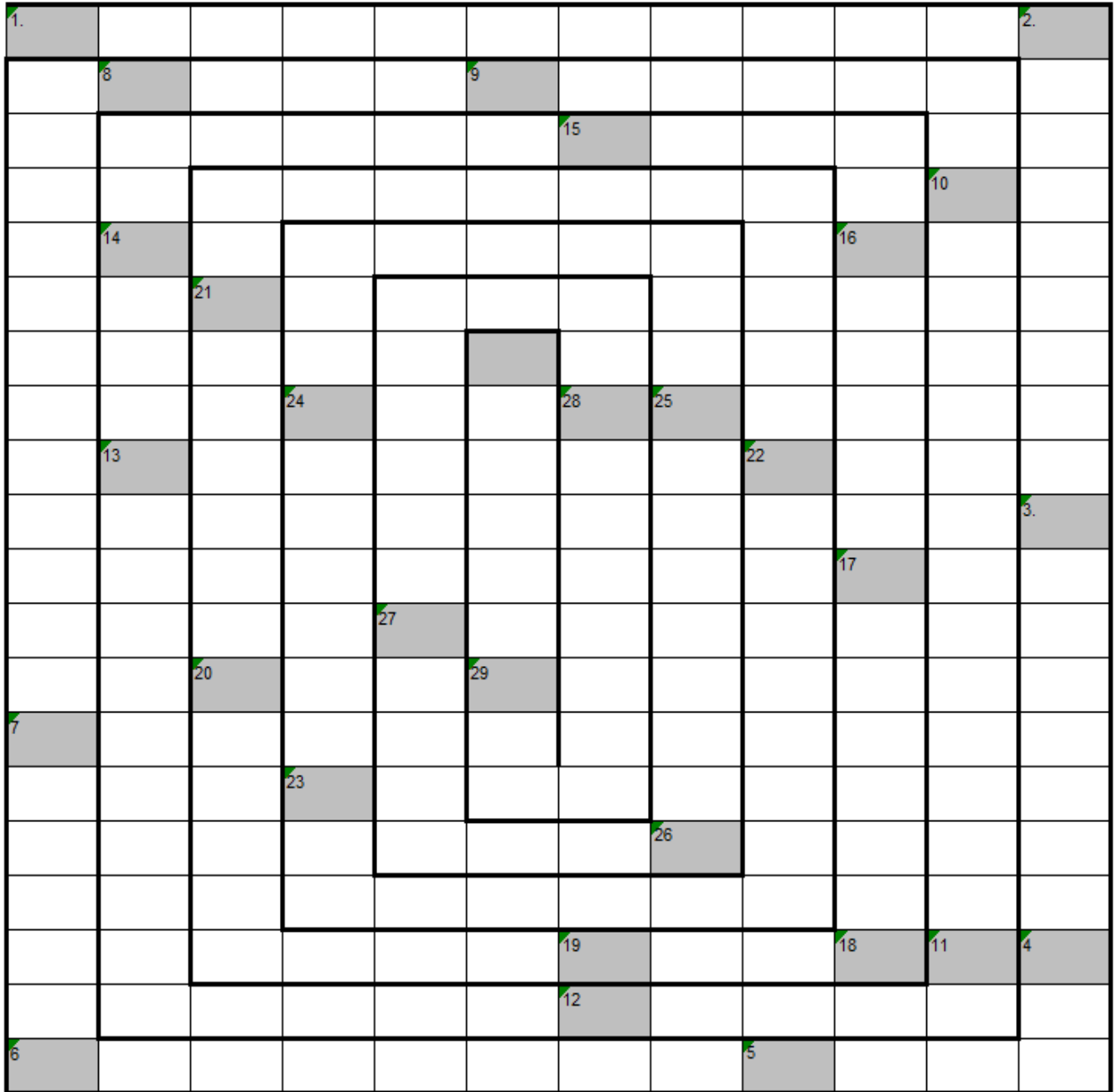
New members are always welcome. If you would like to join us then either call The Wellington and book on 01842 828224, before 4pm on the previous Wednesday, or email the Club coordinator Paul Garland at **garlandp@btinternet.com**.

Our next meeting will be on Saturday 3rd January. Our speaker will be Robert Walden who will give us a talk entitled, “Three Walks”.

WORD TRAIL

Janet Clements brings us a different type of puzzle, a Word Trail.

Starting at No.1 follow the clue numbers around the box clockwise finishing in the middle. The last letter of each answer is the first letter of the next answer. Work clockwise. Have Fun



CLUES

- 1 These waterfalls straddle the Canada and United States of America (7-5)
- 2 Eruption of intense high energy from the Sun (5-5)
- 3 MUSIC: A 2013 song by Paul McCartney reflecting his early musical career (5-4)

- 4 A shape made up of curves, each one above or wider than the one before (6)
- 5 A vehicle having a convertible top for the back seat (9)
- 6 Name the type of bomb that finally sank the German Battleship Tirpitz during WW2 (7)
- 7 FILM: dated 2006 starring Owen Wilson - a best man stays on as a house guest with newlyweds (3-2-3-6)
- 8 This sea duck breeds around the coasts of northern England and Scotland (5)
- 9 Tubular pasta in short ribbed pieces (8)
- 10 A tropical freshwater fish that only lives in India & Bangladesh (6-9)
- 11 This Egyptian Goddess was usually depicted as a Cow (6)
- 12 MEDICAL: A rare intestinal condition caused by ingesting human hair and resulting hairball (8-8)
- 13 Greek fabulist (5)
- 14 Police picture (8)
- 15 Taipei's country (6)
- 16 Subatomic particle (7)
- 17 On the 9th August 1945 the Americans detonated a bomb over which city (8)
- 18 BOTANICAL: The plant also known as Holly or Christmas Berry (4)
- 19 A fear of strangers or foreigners (10)
- 20 Horrified (8)
- 21 Perplexed (15)
- 22 To deprive of a privilege (16)
- 23 Smallest (colloq.) (8)
- 24 A statement in support of a particular truth, fact or claim (11)
- 25 A young hare of less than a year old (9)
- 26 Found in Japan, this small volcano is found in Central Honshu. What is it called? (8)
- 27 Medical: A severe and potentially life threatening allergic reaction (11)
- 28 Music: This song was a hit in the late 1970's for the Bee Gees (5-5)
- 29 Rank, status, position (7)

*This month's Word Trail
solution is on page 79.*

*I Can No Longer See You With My Eyes Or
Touch You with My Hands, But I Will Feel You
In My Heart Forever*



AWARD
WINNING
BUSINESS

With Over
40 Years
Experience

MSM
MARK SKINNER
FUNERAL SERVICE



SAIF
INDEPENDENT
FUNERAL
DIRECTORS

**Our family and caring team will look after
your loved one, like we would our own**

"After recommendations, research showed impeccable reviews and very competitive prices. You were not only totally professional and so approachable, but treated my Dad like I felt you would your own family. Wouldn't go anywhere else!" G Kent

**Memorials • Bereavement Support
Competitive Pricing and Funeral Plans
Available 24 hours A Day**

London Road, Brandon, Suffolk, IP27 0EW, T: **01842 810534**
27 High Street, Lakenheath, Suffolk, IP27 9JS, T: **01842 862777**
30 Bury Road, Thetford, Norfolk, IP24 3DE, T: **01842 752197**

www.markskinnerfunerals.org.uk

Feltwellians Around The World



Richard Knowles.

Hi, I would like to be added to the Feltwellians list.

I was born May 1959 at The Woodlands, Bell Street, just up from the Church.

I went to Feltwell primary and middle then onto Methwold secondary.

I also lived at Corkway Drove when my stepfather worked for Weasenham farms.

My grandparents were Mary and James Carey. She used to be the post lady and we cycled all over delivering mail even down the Fens.

I left the area in 1976 and now live in Attleborough.

I remember getting hair cuts at Parnell barbers and Vincent's, the small shop opposite our house.

If anyone remembers Richard and would like to contact him, his email address is available via the Feltwellians list on the Feltwell website—www.feltwell.net/worldwide.htm

Methodist Church Community Hall
Book - 21 March - Now.
EASTER CRAFT FAIR
FROM 10am



Something different this month. I'm publishing the breakdown of the replies to the question, "How likely are you to recommend this practice?" on the automated post-appointment 'Friends and Family' NHS request system. The requests are required as part of the surgery's contract with the NHS and, as you will read, are anonymous.

The Practice Manager is required to complete feedback to any negative comments. I'm only going to print her answers as, I believe, they address the most common complaints. As usual the vast majority of comments are positive. In response to the negative feedback comments:

2 weeks for a routine appointment is standard practice for most GP

surgeries. I'm afraid this is to be expected, and, in some cases it can be longer than this. For example, when the surgery is under pressure during the winter period, it can be 3 weeks for a routine appointment.

Waiting too long to be called into your appointment – again, this is to be expected on some occasions given the nature of healthcare. On the occasion the clinician was late arriving to the surgery, this can be for various reasons, but it is rare that it happens.

Health checks – we offer these in line with national NHS guidelines. If you feel you have been missed, please contact the surgery so that we can investigate this for you. Unfortunately, these feedback forms are anonymous so we can't check unless you contact us.

It is important you arrive on time to your appointments otherwise it makes the clinics run later than anticipated and causes all other patients who are booked in after you to run late.

Confusion re health and referral into other services – please contact the surgery to discuss this matter as the form is anonymous, so we can't investigate it for you otherwise.

Extremely Likely	261
Likely	68
Neither	15
Unlikely	7
Extremely Unlikely	5
Don't know	3
	359



RSPB Lakenheath Fen

MANAGING REEDBEDS FOR BITTERNS

Thirty years ago, RSPB Lakenheath Fen was created to provide a sanctuary for the increasingly rare Bittern, a beautifully patterned and very well camouflaged species of heron. At the time, only 11 booming males were left in the UK (in 1997) and they were close to becoming extinct on our isles without help. This was because there was very little good-quality reedbed habitat available for them- they need reedbeds to be managed on rotation so that there are always reeds of a variety of ages and densities to suit their different needs.

Bitterns will use newly cut areas to forage for food in. In common with other heron species their diet is very varied- they will eat fish, frogs, toads, insects (especially large ones), small birds, newts and rodents. They also need denser, drier areas to nest and roost in. Adding channels and pools of open water near these drier areas provide foraging space for mother Bitterns, who will take on all of the care and rearing of their chicks. Because they raise them single-handedly, when they have eggs to incubate or young chicks to keep an eye on, they don't like to go far from their nest site.

This variety of habitat only comes about through active management of the reedbed- if areas of reed are left without intervention, within a few years they dry out as tree saplings (especially willow) grow within them and dry the soil out. Old, dead reeds from previous years also build up and as the conditions become drier, they suit other plants such as nettles and brambles more which can slowly take over. When the habitat is lost, not just Bitterns but other reedbed specialists like Bearded tits also lose out, and the area would no longer be suitable for Marsh harriers, Harvest mice or Reed warblers.

At Lakenheath Fen we contribute to this management every winter



Events at RSPB Lakenheath Fen

Places for all events need to be booked online- please visit <https://bit.ly/LakenheathFenEvents> to read more and book tickets.

Moth Mornings

27 February , 27 March (10am to 11am))

Learn more about the amazing world of moths. Join us to admire what we catch in our harmless trap.

RSPB members £5 (£2.50 Under 18's); non-RSPB members £6 (£3 Under 18's)

Wild Wetland Winter Guided Walks

Sunday 11 January (9:30am-12:30pm)

Wrap up warm and join us to see the best that winter has to offer. We will be looking for seasonal highlights with our knowledgeable guides on this beautiful reserve!

RSPB members £12 (£6 for Under 18's); non-RSPB members £15 (£7.50 for Under 18's).

Raptors in the Reedbed Winter Guided Walks

Sunday 25 January (2:30—5:30pm), 15 February (3-6pm)

Watch the reserve come to light as darkness falls, and birds of prey gather to hunt or roost in the reedbeds.

RSPB members £12 (£6 for Under 18's); non-RSPB members £15 (£7.50 for Under 18's).

Winter Walking Safari (FULLY BOOKED)

Sunday 8 February 2026 (9:30am-3:30pm)

Many parts of the reserve aren't usually open to the public, and this behind the scenes tour provides a great opportunity to see the wildlife hiding out in pools and reedbeds which aren't visible from the current visitor trails. This walk is just over six miles long, and will include a visit to Botany Bay SSSI.

RSPB members £20 (£10 for Under 18's); non-RSPB members £25 (£12.50 for Under 18's).

once the nesting season for birds is finished, can be sure we will not disturb any birds unable to leave the area while we work. As I write this in December, work is ongoing and will be into January and February. Our weekly work parties do most of the labour, made up of volunteers and our two wardens Henry and Haydn. They go into areas of reed and remove willow and other woody vegetation (sometimes poplar and alder too) to keep the reedbed open. Ideally, they target these saplings when they are young as it saves a lot of work compared to



New Fen, following a 'hair cut'.

waiting to tackle a larger tree years later! Often, with a larger specimen it will grow back so return visits are needed. We also pay a local contractor to clear ditches and sluices with heavier machinery like an excavator.

We use some of this cut wood from work parties to construct log piles in our woodland areas to benefit bugs and smaller birds, as well as toads and newts, who all may use them to find food and shelter. However, recently we have begun to sell surplus wood (we can only make so many log piles!) to visitors to help raise funds for the reserve. This wood spends at least a year being seasoned in an old barn on site, before being sold as kindling or larger logs. This wood is local and very sustainable- it grows back almost as quickly as we can cut it! If you have a log fire or wood-burner at home, you can pick up small or large bags of logs or kindling from the Visitor Centre during opening hours for £6-£12. We also offer a discount for reusing your hessian sack from us too, as it saves us buying more.

With best wishes for a happy and healthy year ahead- hopefully with some time for you to spend outdoors and amongst nature when you can.

Heidi Jones (Visitor Experience Officer) and the rest of the team at RSPB Lakenheath Fen.

Creative Ideas

BEAUTIFUL CURTAINS,
BLINDS & SOFT FURNISHINGS

Free Home consultation &

Measuring service

Fabrics - Tracks - Poles

Curtain Alterations considered

COMPLETE FITTING SERVICE

Call 01842 828643 / 07545 220477

find us on Facebook & Instagram

NEED A HANDYMAN?

PRICES FROM £25 PER HOUR

Qualified Electrician and Plumber



HARWOOD HANDYMAN

AND MAINTENANCE SERVICES

MARTIN HARWOOD

mharwoodhandyman@gmail.com

07521 006005

TRUSTY GARDEN CARE

Grass - Hedges - Trees - Landscaping

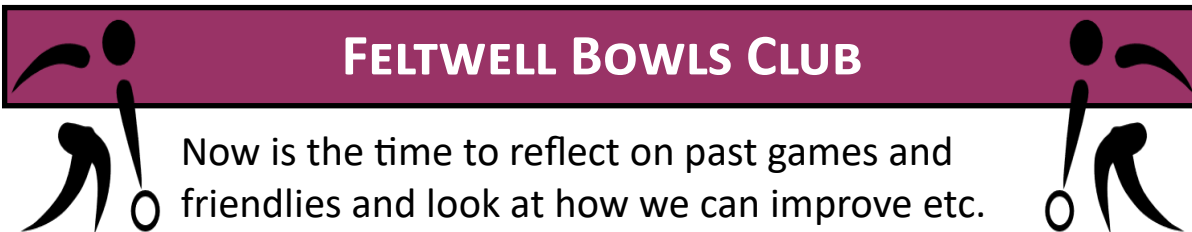
07979 225691

trustygardencare@gmail.com



@trustygardencare

Care & management of trees a speciality



Now is the time to reflect on past games and friendlies and look at how we can improve etc.

We had some good games and some poor, the friendlies were very friendly and enjoyed by all the players.

Our coffee morning held on the 13th December was a bit late to report on in this edition, I will report in the next edition.

We held our AGM on 21st November it was well attended. About 85% of the Officers were prepared to carry on for a further year.

We now have a new Vice Chairman and 2 new committee members.

We were unable appoint a Vice Captain. We hope to resolve this at the committee meeting.

We have no coming events at present but hope to have something in the next edition.

Hoping you had a lovely and enjoyable Christmas.

We wish you all the best wishes for the New Year

Max



A child visiting their grandfather in the hospital saw the nurse taking his vitals and asked, "Are you going to recharge Grandpa's batteries?"

With thanks to forum.facmedicine.com

01842
828481

FELTWELL SURGERY OPENING

8.00am - 6.30pm Mon-Fri only

Extended Hours for Appointments Only

Tuesday: 07:30 – 08:00 Thursday: 18.30 – 19.00

Out of Hours Service - Between 18:30 and 08:00, Monday to Friday, and all day at weekends and on Bank Holidays your call will be redirected to the **NHS 111** service.

**In a genuine emergency you should call 999 and ask for an ambulance.
Chest pains and / or shortness of breath constitute as an emergency.**

01842
828481



Raise FREE donations for

Feltwell Bowls Club

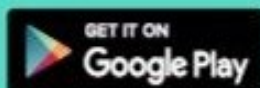
every time you shop online

Search for us on: easyfundraising.org.uk

8,000+ online retailers will give us a free donation
when you shop with them at no extra cost to you



Download the
easyfundraising App



SUBSCRIPTION INFORMATION

If you would like future
issues of this magazine

delivered **FREE** to your home in Feltwell please contact our
Distribution Manager Ian Webb on 828167.

March-March -£5 (12 issues, 2 free).

All subscriptions below 11 copies are pro rata.

West Norfolk Aviation Society

www.westnorfolkaviationsociety.org.uk



December 2025

The meeting this month was that dirge of all societies and charities the Annual General Meeting (AGM). The meeting kicked off at 19:30 with a short statement from our chairman, Chris Halliday, who went over the year and professed it a success and looked forward to next year.

There followed the normal course of AGM's the world over with discussion around officials and subscriptions. To save the reader from falling off their chair from boredom suffice to say all positions were filled and the main headlines were to increase the subs to £20 per annum after it being held at the current rate for very many years. This was all carried without any dissent. Also the Press Officer role was confirmed as yours truly! The AGM was closed at 20:50 and a welcome break to eat the delicious food and snacks that is part of our evening meeting at the Mundford Bowls Club.

After the snacks and much light hearted discussion between friends a small quiz was undertaken organised by our chairman on a vaguely aviation theme. I was one of the successful prize-winners and I choose the "Battle of Britain Memorabilia" which contained a pair of, 'Thermal Boots as worn by Sir Douglas Bader during the Battle (allegedly)", think about it.....

My prize winning question was knowing the answer to the question: "In western Europe the F104 Starfighter was a very popular combat aircraft in the 70's and 80's, by popular myth what was the easiest way to obtain an example?"

If you know the answer to this you are at least as old as I am and probably have a military background. In the meantime space dictates that I will have to leave you guessing but I will reveal the answer in my next report. Happy New year to everyone from the WNAS.

For details of our Society and our meetings, please Google us!

Mark Burch, WNAS Scribe

MOBILE LIBRARY TIMETABLE—THURSDAYS

Stop Name	Arrival Time	Departure Time	Postcode
Wilton Road	14:25	14:35	IP26 4AY
Fairfield Way	14:40	15:00	IP26 4AT
Church	15:05	15:35	IP26 4DA
St Nicholas Drive	15:40	16:00	IP26 4DW
Munson's Lane nr junction with OMR	16:05	16:25	IP26 4DE
Hereward Way	16:30	16:50	IP26 4BP

Upcoming Dates

22 January 2026

19 February

19 March

Please note this information is subject to change or amendment both on a permanent and temporary basis.

For all enquiries about this route please call
01603 222303

SIR EDMUND DE MOUNDEFORD CHARITY

GRANTS AVAILABLE FOR POST 16 STUDY

- Are you over 16?
- Have you lived in Feltwell for at least two years and are still resident in the village?
- Are you studying at College or University?
- Do you need assistance with the purchase of equipment or books to enable you to study?

If you can answer "YES" to all of the above then apply in writing to Mr M. Hawkins, Agent for Sir Edmund De Moundeford Trust, 15 Lynn Road, Downham Market, Norfolk. PE38 9NL. **OR** by email to info@barryhawkins.co.uk, also send a copy to Mr Paul Garland, (Trustee) at garlandp@btinternet.com. Please use Subject: Education Grant. In your letter/email you **MUST** include the date you moved into the village, details of the course you are studying, where you are studying, the qualification you expect to achieve upon completion and any costs necessary for you to embark upon the course. Include details of any books and/or equipment required. If you know a Trustee please put their name in your application. The award of a grant is at the discretion of the Trustees and shall not exceed £300. Only one award will be made per applicant.

WORDTRAIL ANSWERS FOR DECEMBER 2025

Many apologies but I mistakenly left the Word Trail answers for last November in the December issue!. Here are the answers for December 2025. I have double checked I've got the January answers correct.

¹ F	E	L	L	U	C	² A	N	G	I	N	³ A
N	T	H	E	T	I	¹⁰ C	O	P	R	¹¹ A	C
Y	I	N	E	I	N	C	H	N	A	M	T
⁹ S	¹⁵ N	L	L	I	N	²⁰ S	A	L	I	N	R
R	I	O	E	T	H	I	R	V	L	I	E
E	A	C	H	S	T	O	²⁴ D	A	¹⁶ S	O	S
T	R	E	T	L	Y	²⁷ Y	A	D	P	T	⁴ S
S	E	N	D	O	T	O	V	O	I	I	C
U	H	N	R	T	I	G	I	R	N	C	A
B	T	A	A	O	L	²⁸ A	D	D	D	F	M
M	N	Z	W	E	I	C	F	A	R	L	P
A	I	U	D	²⁶ L	B	O	I	L	Y	U	E
⁸ D	R	¹⁹ S	²³ E	E	²⁹ A	N	N	²¹ I	E	I	R
E	E	E	C	A	U	C	C	R	¹⁷ R	¹² D	E
L	T	L	N	H	G	A	H	N	H	R	⁵ D
L	H	P	A	P	A	²⁵ R	E	B	O	V	R
O	G	A	R	E	T	T	²² U	R	D	D	A
R	U	¹⁸ N	O	R	D	N	E	D	O	O	I
T	A	¹⁴ L	U	A	H	L	E	E	¹³ K	C	N
⁷ S	E	T	A	R	H	P	U	⁶ E	P	I	P

NEW YEAR, NEW ME LOGISTICAL SOLUTION

Jonathan	Swimming	1 hour	Cereal Bar
Bridget	Cross Training	45 Minutes	Gel Pouch
Christina	Rowing	30 Minutes	Chocolate Bar
Abraham	Weightlifting	1 ¹ / ₂ Hours	Orange

Chris Mills

Antique Furniture Restorations

Repairs, Repolishing
Waxing and Woodworm Treatment

Antiques bought and sold.

Tel: 01842 827357
Mobile: 07790 707036

GOOD QUALITY
Second-hand Furniture,
Carpets, Bric-a-Brac, Toys
Bought & Sold

OPEN: Monday - Saturday 9:00 - 4:00

Some Thursday's CLOSED

Telephone Emmie: 01842 828406
53 High Street, Feltwell IP26 4AF

Pest & Vermin Control

Graham Smith & Sons

- ♦ Local family business
- ♦ NPTA badge carried
- ♦ Prompt, 24 hour reliable service, 7 days a week
- ♦ For mice, rats, wasps, ants, fleas, mites & squirrels

Tel/Fax 01842 879904 Mobile 07946 733188
Graham.smith09@hotmail.co.uk

Rothwell's
Carpet Cleaning

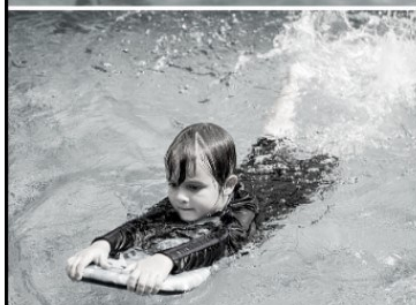
Carpet Cleaning

Stone Floors, Upholstery, Rugs

*Call Oliver or Max Campbell
for expert help today.*

01638 428 060

www.Rothwells.biz



SWIMMING LESSONS

Ages 4+ Beginners Improvers Advanced
FELTWELL

- Small classes - max 6 in a group
- Child centred learning
- Fun & progressive
- Experienced & highly qualified teachers



KB SWIM SCHOOL



kbswimschool.com

NEWS FROM THE PARISH COUNCIL

A Meeting of the Parish Council was held on Monday the 8th of DECEMBER 2025 in the British Legion, Long Lane. Eight Councillors and Ms Vikki Quamina (Community Liaison Advisor at RAF Lakenheath) attended

Volunteers from RAF Lakenheath had been supporting residents at Feltwell Lodge Care Home in the run up to Christmas. A tour of the Explosive Ordnance Disposal at RAF Feltwell is being offered to Feltwell residents to give an insight into how operations are carried out and understand why they are necessary. This will take place on Friday 13th February but places are limited so anyone interested in attending should contact the Clerk on 01842 828383 or email clerk@feltwellparishcouncil.gov.uk before 26th January 2026.

The Network Safety Team (NST) and Andrew Wallace of NCC Highways visited the village on 27th November to look at improving safety at Hill Street junction with St Mary's/The Beck and changing priority at Short Beck/Long Lane/High Street. The NST are assessing feasibility of a couple of schemes but disappointingly cannot take them forward so Mr Wallace would have to put them on his forward programme and the earliest date for design would be financial year 2027/28.

Clerk wrote to Terry Jermy MP regarding Southery Road and he had contacted Andrew Wallace for his views. Mr Wallace said there would always be areas of deformation due to the substrate geology of the area but that a very dry summer had exacerbated the issue. He was aware the Parish Council felt recent repair work was not suitable however estimated that over £1m had been spent on repairs or resurfacing works on this road over the past 15 years which was much higher than any other 'C' class road in the west area or countrywide. He will continue to monitor the road on a regular basis and programme further repairs by the same method as previous to deal with other areas of deviation. He will be reviewing warning signs along the road to keep the public as well

FELTWELL FUEL ALLOTMENT CHARITY

If you can answer “YES” to the following two questions you may be eligible for a **Winter 2025 Fuel Payment** from three Feltwell charities.

Are you at least 70 years of age or will be by the end of 2025?

Have you lived in the village of Feltwell for a minimum of 10 years and are still resident?

The Feltwell Fuel Allotment Charity does its best to maintain a list of qualifying recipients but relies heavily on local knowledge. The list is also used by the Trustees of the Atmere and De Moundeford charities who also give winter fuel donations. Last year the three charities issued a combined donation of £100.

If you meet the qualifying criteria and have **not** received a grant before, please write to: Feltwell Fuel Allotment Agent, 15 Lynn Road, Downham Market, Norfolk, PE38 9NL. Please provide your **name, address, date of birth and the date that you moved into the village.**

Please mark the envelope “**Feltwell Fuel Allotment List.**”

Only one grant per household will be given.

ADVERTISING RATES

Full page—£240 per year or £24 per month

Half page—£120 per year or £12 per month

Quarter page—£60 per year or £6 per month

Eighth page—£30 per year or £3 per month

Our advertising year runs 1st Apr to 31st March

If you would like to place an advert in this magazine please contact our Advertising Manager: Jean Winter

Email: jean.winter@gmx.com

informed as possible. Mr Jermy hoped to meet with Mr Storey early in the new year to discuss a number of issues in his ward of which Southery Road was one of them. He said the Labour government had just announced record highways funding for NCC, the largest amount of any local authority outside of London, and ultimately NCC must use these resources in the most appropriate manner.

Residents are encouraged to report any Highways issues to NCC via their website www.norfolk.gov.uk/highwaysproblem

Application to NCC's Parish Partnership Scheme for a solar-powered speed indicator sign to be installed along Wilton Road and Paynes Lane had been refused as no accidents had been recorded in the last five years, there is already a VAS on Wilton Road, and Paynes Lane has 90 degree bends which should help constrain vehicle speeds. Councillors felt Highways would rather be reactive than proactive which was very concerning.

2026/7 budget was discussed and the precept will be set at the next meeting.

Following a recent spate of posts on the village Facebook page complaining that the Parish Council does nothing regarding issues such as dangerous junctions and parking on the green spaces, information will be provided in next month's Parish Magazine and on the Parish Council's Facebook page detailing how the Council has been working hard to alleviate these exact issues as well as others. This information can also be found in meeting minutes which are published on our website. **Furthermore, there is currently a Parish Councillor vacancy so if anyone is of the belief that they can do better then please do apply. The Parish Council noticeboard has further info.**

Mr Storey thanked Mr Rayner and his family for putting up the Christmas lights in St Mary's Churchyard again this year which were absolutely beautiful.

Grey's Funfair will visit the village week commencing 11th May 2026 and will open that weekend.

Residents are kindly requested to deposit any glass waste into the

Continued on page 79

WORD SEARCH SOLUTION

**NEXT MONTH'S WORD SEARCH WILL BE ON
WORDS WITH A SILENT LETTER**

W	E	R	O	M	A	C	Y	S	A
I	B	P	E	R	O	H	T	S	L
L	A	I	S	U	R	P	Y	C	D
L	H	N	R	C	H	I	A	P	E
O	X	E	T	C	R	P	E	A	R
W	L	E	Z	A	H	A	B	Y	B
R	E	S	S	L	H	O	D	J	L
A	R	M	I	B	C	K	G	E	A
S	N	A	W	O	R	T	P	L	C
H	D	P	R	O	I	Y	D	D	K
M	U	L	P	K	B	E	C	O	T
A	I	E	Q	E	R	W	T	U	H
D	F	E	L	L	E	A	U	G	O
C	O	M	P	I	V	X	N	L	R
G	O	A	P	P	L	E	T	A	N
H	Y	M	Q	K	I	B	S	S	Y
S	O		M	A	S	I	E	F	L
P	U	R	J	O	T	R	H	I	L
R		T	N	G	N	K	C	R	O
U	U	V	P	B	E	B	O	C	H
C	Y	P	A	Y	E	C	O	E	B
E	A	S	A	B	L	A	R	X	O
G	H	E	R	R	Y	A	M	F	A
S	A	A	R	T	L	P	C	Y	T
H	E	M	L	O	C	K	H	U	E
T	U	N	L	L	A	W	B	I	E

This magazine is printed by **Limetree Printing,**

Unit 5 Trafalgar Industrial Estate, Downham Market, PE38 9SW

Phone: 01366 383989

WORD TRAIL SOLUTION

¹ . N	I	A	G	A	R	A	F	A	L	L	² . S
E	⁸ E	I	D	E	⁹ R	I	G	A	T	O	O
R	O	T	O	F	I	¹⁵ T	I	A	W	N	L
P	H	S	C	O	M	B	O	B	A	¹⁰ I	A
U	¹⁴ P	I	T	I	M	O	N	U	¹⁶ N	N	R
D	O	²¹ D	S	L	A	X	I	L	E	D	F
D	S	E	E	Y	N	I	A	T	U	I	L
N	A	L	²⁴ T	H	O	²⁸ S	²⁵ L	E	T	A	A
A	¹³ E	L	S	P	L	T	E	²² D	R	N	R
E	M	A	E	A	E	A	V	I	O	G	³ . E
M	O	P	I	N	H	Y	E	S	¹⁷ N	L	A
U	R	P	N	²⁷ A	C	I	R	F	A	A	R
O	D	²⁰ A	E	R	²⁹ E	N	E	R	G	S	L
⁷ Y	N	I	E	A	V	A	T	A	A	S	Y
O	Y	B	²³ T	H	I	L	T	N	S	F	D
B	S	O	N	A	K	A	²⁶ T	C	A	I	A
L	L	H	E	M	E	S	I	H	K	S	Y
L	E	P	O	N	E	¹⁹ X	E	L	¹⁸ I	¹¹ H	⁴ S
A	Z	N	U	P	A	¹² R	O	H	T	A	P
⁶ T	E	L	U	A	D	N	A	⁵ L	A	R	I

bottle bank on the playing field as the Parish Council obtains recycling credits for every tonne collected.

Please subscribe to the Council's website (<https://feltwellparishcouncil.gov.uk>) and Facebook page for latest news and notifications including RAF Feltwell demolition activities and road closures.

The next Parish Council meeting will take place at the British Legion on Monday 12th January 2026 at 7.30 pm. Everyone is welcome.

Need help with transport?



Feel isolated?

Door to Door Transport?

We have the following options
available in your area:

Rural Dial-a-Bus

Villages to the nearest town,
perfect for a spot of shopping

Community Car Scheme

Transport by volunteers to
medical appointments

For more information Call 01553 770310